



ELECTRONIC COPY

LG707556373
Report verification at igi.org



October 30, 2025
IGI Report Number **LG707556373**
Description **LABORATORY GROWN DIAMOND**
Shape and Cutting Style **CUT CORNERED
RECTANGULAR MODIFIED
BRILLIANT**
Measurements **7.80 X 5.62 X 3.89 MM**
GRADING RESULTS
Carat Weight **1.67 CARAT**
Color Grade **FANCY INTENSE BLUISH
GREEN**
Clarity Grade **VVS 1**

LABORATORY GROWN DIAMOND REPORT

October 30, 2025
IGI Report Number **LG707556373**
Description **LABORATORY GROWN DIAMOND**
Shape and Cutting Style **CUT CORNERED RECTANGULAR
MODIFIED BRILLIANT**
Measurements **7.80 X 5.62 X 3.89 MM**

GRADING RESULTS

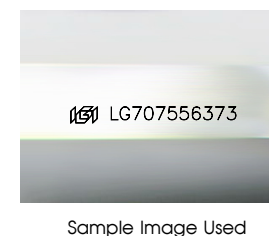
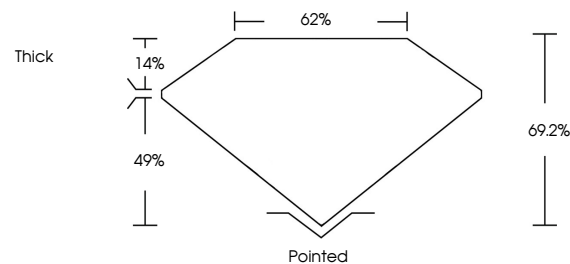
Carat Weight **1.67 CARAT**
Color Grade **FANCY INTENSE BLUISH GREEN**
Clarity Grade **VVS 1**

ADDITIONAL GRADING INFORMATION

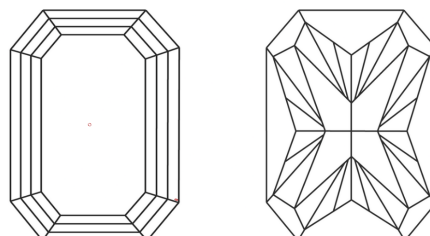
Polish **EXCELLENT**
Symmetry **EXCELLENT**
Fluorescence **NONE**
Inscription(s) **IGI LG707556373**

Comments: This Laboratory Grown Diamond was created by High Pressure High Temperature (HPHT) growth process. Indications of post-growth treatment.

PROPORTIONS



CLARITY CHARACTERISTICS



KEY TO SYMBOLS

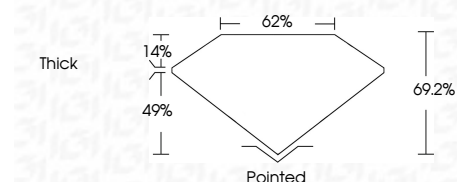
Red symbols indicate internal characteristics.
Green symbols indicate external characteristics.

COLOR

D E F G H I J Faint Very Light Light

CLARITY

FL	IF	VVS ¹⁻²	VS ¹⁻²	SI ¹⁻²	I ¹⁻³
Flawless	Internally Flawless	Very Very Slightly Included	Very Slightly Included	Slightly Included	Included



ADDITIONAL GRADING INFORMATION

Polish **EXCELLENT**
Symmetry **EXCELLENT**
Fluorescence **NONE**
Inscription(s) **IGI LG707556373**
Comments: This Laboratory Grown Diamond was created by High Pressure High Temperature (HPHT) growth process. Indications of post-growth treatment.



October 30, 2025
IGI Report No LG707556373
CUT CORNERED RECT. MODIFIED BRILLIANT
7.80 X 5.62 X 3.89 MM
1.67 CARAT
FANCY INTENSE BLUISH GREEN
VVS 1
69.2%
62%
Thick
Pointed
EXCELLENT
EXCELLENT
NONE
IGI LG707556373

Comments: This Laboratory Grown Diamond was created by High Pressure High Temperature (HPHT) growth process. Indications of post-growth treatment.