



ELECTRONIC COPY

LG707556357
Report verification at igi.org



October 29, 2025
IGI Report Number **LG707556357**
Description **LABORATORY GROWN DIAMOND**
Shape and Cutting Style **CUSHION MODIFIED BRILLIANT**
Measurements **7.40 X 6.07 X 4.13 MM**
GRADING RESULTS
Carat Weight **1.79 CARAT**
Color Grade **FANCY INTENSE GREEN**
Clarity Grade **VVS 2**

LABORATORY GROWN DIAMOND REPORT

October 29, 2025
IGI Report Number **LG707556357**
Description **LABORATORY GROWN DIAMOND**
Shape and Cutting Style **CUSHION MODIFIED BRILLIANT**
Measurements **7.40 X 6.07 X 4.13 MM**

GRADING RESULTS

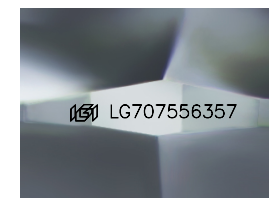
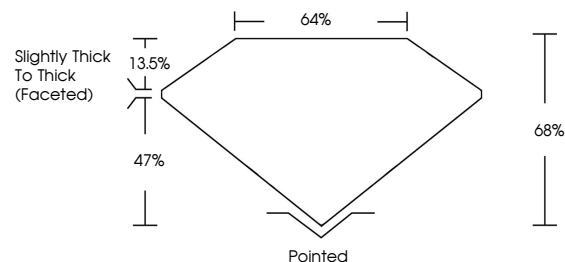
Carat Weight **1.79 CARAT**
Color Grade **FANCY INTENSE GREEN**
Clarity Grade **VVS 2**

ADDITIONAL GRADING INFORMATION

Polish **EXCELLENT**
Symmetry **EXCELLENT**
Fluorescence **NONE**
Inscription(s) **IGI LG707556357**

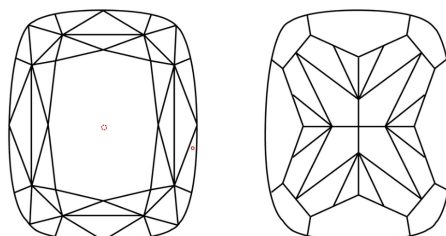
Comments: This Laboratory Grown Diamond was created by High Pressure High Temperature (HPHT) growth process.
Indications of post-growth treatment.

PROPORTIONS



Sample Image Used

CLARITY CHARACTERISTICS



KEY TO SYMBOLS

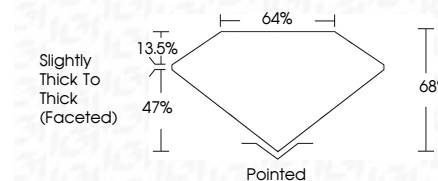
Red symbols indicate internal characteristics.
Green symbols indicate external characteristics.

COLOR

D E F G H I J Faint Very Light Light

CLARITY

FL	IF	VVS ¹⁻²	VS ¹⁻²	SI ¹⁻²	I ¹⁻³
Flawless	Internally Flawless	Very Very Slightly Included	Very Slightly Included	Slightly Included	Included



ADDITIONAL GRADING INFORMATION

Polish **EXCELLENT**
Symmetry **EXCELLENT**
Fluorescence **NONE**
Inscription(s) **IGI LG707556357**
Comments: This Laboratory Grown Diamond was created by High Pressure High Temperature (HPHT) growth process.
Indications of post-growth treatment.



October 29, 2025
IGI Report No LG707556357
CUSHION MODIFIED BRILLIANT
7.40 X 6.07 X 4.13 MM
1.79 CARAT
FANCY INTENSE GREEN
VVS 2
68%
64%
Slightly Thick To Thick (Faceted)
Pointed
EXCELLENT
EXCELLENT
NONE
IGI LG707556357
Comments: This Laboratory Grown Diamond was created by High Pressure High Temperature (HPHT) growth process.
Indications of post-growth treatment.