



ELECTRONIC COPY

LG707556323
Report verification at igi.org



October 29, 2025
IGI Report Number **LG707556323**
Description **LABORATORY GROWN DIAMOND**
Shape and Cutting Style **SQUARE CUSHION MODIFIED BRILLIANT**
Measurements **6.89 X 6.84 X 4.41 MM**
GRADING RESULTS
Carat Weight **1.90 CARAT**
Color Grade **FANCY VIVID YELLOW**
Clarity Grade **VVS 1**

LABORATORY GROWN DIAMOND REPORT

October 29, 2025
IGI Report Number **LG707556323**
Description **LABORATORY GROWN DIAMOND**
Shape and Cutting Style **SQUARE CUSHION MODIFIED BRILLIANT**
Measurements **6.89 X 6.84 X 4.41 MM**

GRADING RESULTS

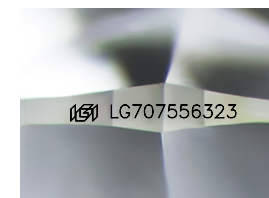
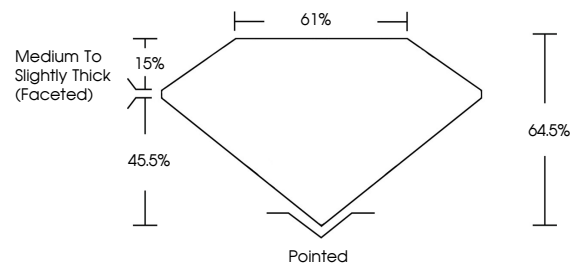
Carat Weight **1.90 CARAT**
Color Grade **FANCY VIVID YELLOW**
Clarity Grade **VVS 1**

ADDITIONAL GRADING INFORMATION

Polish **EXCELLENT**
Symmetry **EXCELLENT**
Fluorescence **NONE**
Inscription(s) **IGI LG707556323**

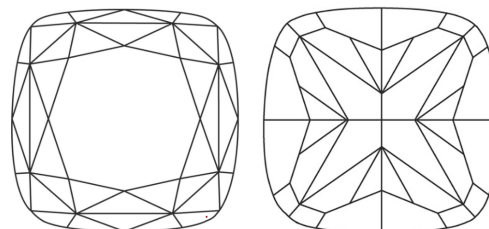
Comments: As Grown - No indication of post-growth treatment.
This Laboratory Grown Diamond was created by High Pressure High Temperature (HPHT) growth process.

PROPORTIONS



Sample Image Used

CLARITY CHARACTERISTICS



KEY TO SYMBOLS

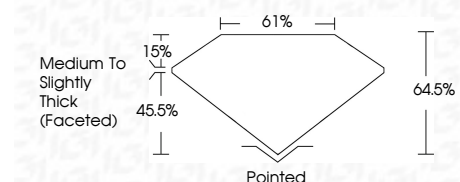
Red symbols indicate internal characteristics.
Green symbols indicate external characteristics.

COLOR

D E F G H I J Faint Very Light Light

CLARITY

FL	IF	VVS ¹⁻²	VS ¹⁻²	SI ¹⁻²	I ¹⁻³
Flawless	Internally Flawless	Very Very Slightly Included	Very Slightly Included	Slightly Included	Included



ADDITIONAL GRADING INFORMATION

Polish **EXCELLENT**
Symmetry **EXCELLENT**
Fluorescence **NONE**
Inscription(s) **IGI LG707556323**
Comments: As Grown - No indication of post-growth treatment.
This Laboratory Grown Diamond was created by High Pressure High Temperature (HPHT) growth process.



October 29, 2025
IGI Report No LG707556323
SQUARE CUSHION MODIFIED BRILLIANT
6.89 X 6.84 X 4.41 MM
1.90 CARAT
FANCY VIVID YELLOW
VVS 1
64.5%
61%
Medium to Slightly Thick (Faceted)
Pointed
EXCELLENT
EXCELLENT
NONE
IGI LG707556323
Comments: As Grown - No indication of post-growth treatment.
This Laboratory Grown Diamond was created by High Pressure High Temperature (HPHT) growth process.