



ELECTRONIC COPY

LG707556242
Report verification at igi.org



October 16, 2025
IGI Report Number **LG707556242**
Description **LABORATORY GROWN DIAMOND**
Shape and Cutting Style **SQUARE CUSHION MODIFIED BRILLIANT**
Measurements **5.88 X 5.76 X 3.88 MM**
GRADING RESULTS
Carat Weight **1.25 CARAT**
Color Grade **FANCY INTENSE BLUE**
Clarity Grade **VVS 2**

October 16, 2025
IGI Report Number **LG707556242**
Description **LABORATORY GROWN DIAMOND**
Shape and Cutting Style **SQUARE CUSHION MODIFIED BRILLIANT**
Measurements **5.88 X 5.76 X 3.88 MM**

GRADING RESULTS

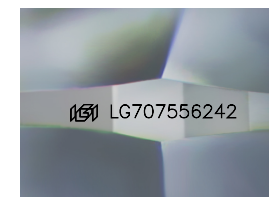
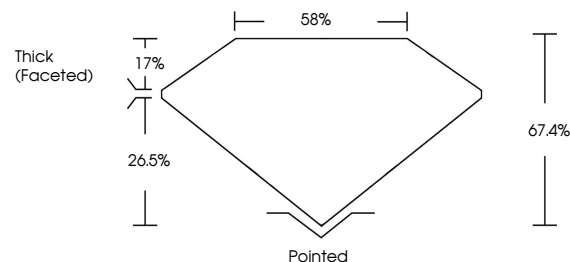
Carat Weight **1.25 CARAT**
Color Grade **FANCY INTENSE BLUE**
Clarity Grade **VVS 2**

ADDITIONAL GRADING INFORMATION

Polish **EXCELLENT**
Symmetry **EXCELLENT**
Fluorescence **NONE**
Inscription(s) **IGI LG707556242**

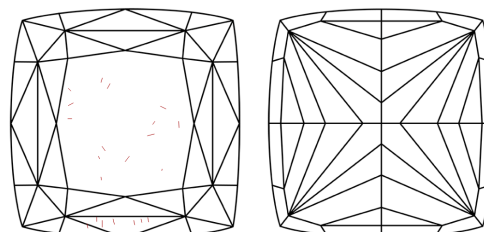
Comments: As Grown - No indication of post-growth treatment.
This Laboratory Grown Diamond was created by High Pressure High Temperature (HPHT) growth process.

PROPORTIONS



Sample Image Used

CLARITY CHARACTERISTICS



KEY TO SYMBOLS

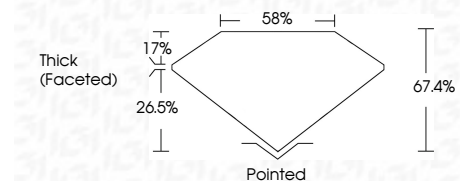
Red symbols indicate internal characteristics.
Green symbols indicate external characteristics.

COLOR

D E F G H I J Faint Very Light Light

CLARITY

FL IF VVS¹⁻² VS¹⁻² SI¹⁻² I¹⁻³
Flawless Internally Flawless Very Very Slightly Included Very Slightly Included Slightly Included Included



ADDITIONAL GRADING INFORMATION

Polish **EXCELLENT**
Symmetry **EXCELLENT**
Fluorescence **NONE**
Inscription(s) **IGI LG707556242**
Comments: As Grown - No indication of post-growth treatment.
This Laboratory Grown Diamond was created by High Pressure High Temperature (HPHT) growth process.



IGI



October 16, 2025
IGI Report No LG707556242
SQUARE CUSHION MODIFIED BRILLIANT
6.88 X 5.76 X 3.88 MM
1.25 CARAT
Color Grade **FANCY INTENSE BLUE**
Clarity Grade **VVS 2**
Depth **67.4%**
Table **58%**
Girdle **Thick (Faceted)**
Culet **Pointed**
Polish **EXCELLENT**
Symmetry **EXCELLENT**
Fluorescence **NONE**
Inscription(s) **IGI LG707556242**

Comments: As Grown - No indication of post-growth treatment.
This Laboratory Grown Diamond was created by High Pressure High Temperature (HPHT) growth process.