



ELECTRONIC COPY

LABORATORY GROWN DIAMOND REPORT

July 10, 2025	
IGI Report Number	LG707555545
Description	LABORATORY GROWN DIAMOND
Shape and Cutting Style	ROUND BRILLIANT
Measurements	6.49 - 6.51 X 4.04 MM

GRADING RESULTS

Carat Weight	1.06 CARAT
Color Grade	D
Clarity Grade	VVS 2
Cut Grade	IDEAL

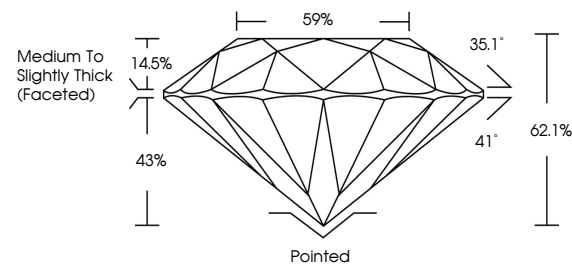
ADDITIONAL GRADING INFORMATION

Polish	EXCELLENT
Symmetry	EXCELLENT
Fluorescence	NONE
Inscription(s)	 LG707555545

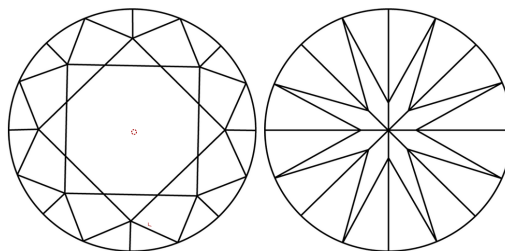
Comments: As Grown - No indication of post-growth treatment.
This Laboratory Grown Diamond was created by High Pressure High Temperature (HPHT) growth process.
Type II

LG707555545
Report verification at igi.org

PROPORTIONS

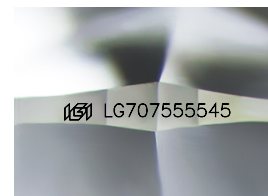


CLARITY CHARACTERISTICS



KEY TO SYMBOLS

Red symbols indicate internal characteristics.
Green symbols indicate external characteristics.



Sample Image Used

COLOR

D E F G H I J Faint Very Light Light

CLARITY

IF WS¹⁻² VS¹⁻² SI¹⁻² 1-3

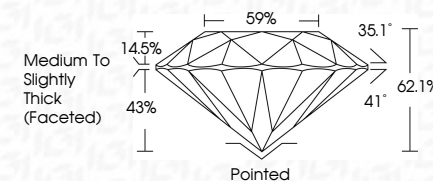
Internally Flawless	Very Very Slightly Included	Very Slightly Included	Slightly Included	Included
------------------------	--------------------------------	---------------------------	----------------------	----------



July 10, 2025	
IGI Report Number	LG707555545
Description	LABORATORY GROWN DIAMOND
Shape and Cutting Style	ROUND BRILLIANT
Measurements	6.49 - 6.51 X 4.04 MM

GRADING RESULTS

Carat Weight	1.06 CARAT
Color Grade	D
Clarity Grade	VVS 2
Cut Grade	IDEAL



ADDITIONAL GRADING INFORMATION

Polish	EXCELLENT
Symmetry	EXCELLENT
Fluorescence	NONE
Inscription(s)	(G) LG707555545
Comments: As Grown - No indication of post-growth treatment.	
This Laboratory Grown Diamond was created by High Pressure High Temperature (HPHT) growth process.	
Type II	



© IGI 2020, International Gemological Institute

FD - 10 20

www.igi.org



THIS DOCUMENT WAS PRODUCED WITH THE FOLLOWING SECURITY MEASURES: SPECIAL DOCUMENT PAPER, INK SCREENS, WATERMARK, BACKGROUND DESIGNS, HOLOGRAM AND OTHER SECURITY FEATURES NOT LISTED AND DO EXCEED DOCUMENT SECURITY INDUSTRY GUIDELINES

July 10, 2025
GI Report No LG707555545
ROUND BRILLIANT

[illegible]

Comments:
As Grown - No indication of post-growth treatment.