

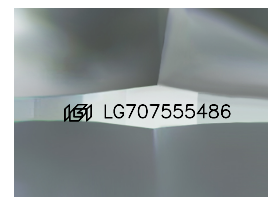
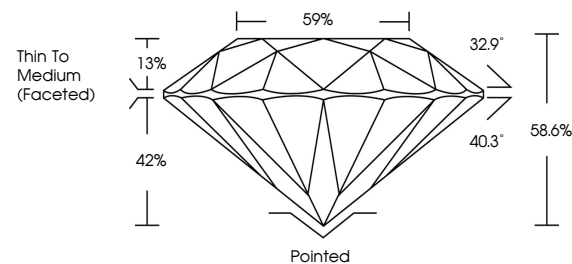


**ELECTRONIC COPY**

## LABORATORY GROWN DIAMOND REPORT

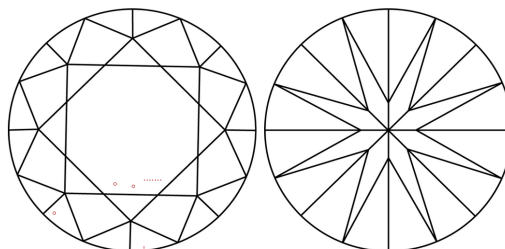
LG707555486  
Report verification at [igi.org](https://igi.org)

## PROPORTIONS



Sample Image Used

## CLARITY CHARACTERISTICS



### KEY TO SYMBOLS

Red symbols indicate internal characteristics.  
Green symbols indicate external characteristics.

## COLOR

D E F G H I J Faint Very Light Light

## CLARITY

IF      WS<sup>1-2</sup>      VS<sup>1-2</sup>      SI<sup>1-2</sup>      I<sup>1-3</sup>

Internally Flawless	Very Very Slightly Included	Very Slightly Included	Slightly Included	Included
------------------------	--------------------------------	---------------------------	----------------------	----------



© IGI 2020, International Gemological Institute

FD - 10 20

**www.igi.org**

## LABORATORY GROWN DIAMOND REPORT



July 11, 2025

IGI Report Number **LG707555486**Description **LABORATORY GROWN DIAMOND**Shape and Cutting Style **ROUND BRILLIANT**

Measurements 7.48 - 7.53 X 4.40 MM

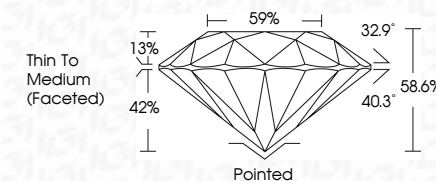
## GRADING RESULTS

Carat Weight 1.51 CARAT

Color Grade D

Clarity Grade **VS 2**

Cut Grade **IDEAL**



### ADDITIONAL GRADING INFORMATION

Polish **EXCELLENT**Symmetry **EXCELLENT**Fluorescence **NONE**Inscription(s)  LG707555486

Comments: As Grown - No indication of post-growth treatment.

This Laboratory Grown Diamond was created by High Pressure High Temperature (HPHT) growth process.

Type II



<div> <div> </div> <div> <p>1.51 CARAT</p> <p>D</p> <p>VS2</p> <p>IDEAL</p> <p>58.6%</p> <p>97%</p> <p>Thin To Medium (Faceted)</p> </div> </div>	<div> <div> </div> <div> <p>1.51 CARAT</p> <p>D</p> <p>VS2</p> <p>IDEAL</p> <p>58.6%</p> <p>97%</p> <p>Thin To Medium (Faceted)</p> </div> </div>
<div> <div> </div> <div> <p>1.51 CARAT</p> <p>D</p> <p>VS2</p> <p>IDEAL</p> <p>58.6%</p> <p>97%</p> <p>Thin To Medium (Faceted)</p> </div> </div>	<div> <div> </div> <div> <p>1.51 CARAT</p> <p>D</p> <p>VS2</p> <p>IDEAL</p> <p>58.6%</p> <p>97%</p> <p>Thin To Medium (Faceted)</p> </div> </div>