



# INTERNATIONAL GEMOLOGICAL INSTITUTE

ELECTRONIC COPY



July 24, 2025

IGI Report Number LG707551598

ROUND BRILLIANT

LABORATORY GROWN DIAMOND

5.71 - 5.74 X 3.50 MM

Carat Weight 0.70 CARAT

Color Grade D

Clarity Grade SI 1

Cut Grade IDEAL

Polish VERY GOOD

Symmetry EXCELLENT

Fluorescence NONE

Inscription(s) IGI LG707551598

Comments: As Grown - No indication of post-growth treatment. This Laboratory Grown Diamond was created by High Pressure High Temperature (HPHT) growth process. Type II

## LABORATORY GROWN DIAMOND REPORT

July 24, 2025

IGI Report Number

LG707551598

Description

LABORATORY GROWN DIAMOND

Shape and Cutting Style

ROUND BRILLIANT

Measurements

5.71 - 5.74 X 3.50 MM

### GRADING RESULTS

Carat Weight

0.70 CARAT

Color Grade

D

Clarity Grade

SI 1

Cut Grade

IDEAL

### ADDITIONAL GRADING INFORMATION

Polish

VERY GOOD

Symmetry

EXCELLENT

Fluorescence

NONE

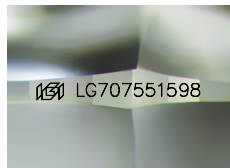
Inscription(s)

IGI LG707551598

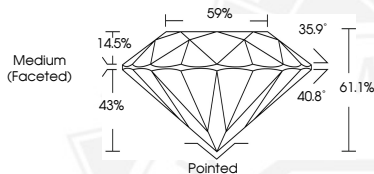
Comments: As Grown - No indication of post-growth treatment.

This Laboratory Grown Diamond was created by High Pressure High Temperature (HPHT) growth process.

Type II



Sample Image Used



July 24, 2025

IGI Report Number LG707551598

ROUND BRILLIANT

LABORATORY GROWN DIAMOND

5.71 - 5.74 X 3.50 MM

Carat Weight 0.70 CARAT

Color Grade D

Clarity Grade SI 1

Cut Grade IDEAL

Polish VERY GOOD

Symmetry EXCELLENT

Fluorescence NONE

Inscription(s) IGI LG707551598

Comments: As Grown - No indication of post-growth treatment. This Laboratory Grown Diamond was created by High Pressure High Temperature (HPHT) growth process. Type II



THIS DOCUMENT WAS PRODUCED WITH THE FOLLOWING SECURITY MEASURES: SPECIAL DOCUMENT PAPER, INK SCREENS, WATERMARK, BACKGROUND DESIGNS, HOLOGRAM AND OTHER SECURITY FEATURES NOT LISTED AND DO EXCEED DOCUMENT SECURITY INDUSTRY GUIDELINES.

For terms & conditions and to verify this report, please visit [www.igi.org](http://www.igi.org)