



ELECTRONIC COPY

LG707549533
Report verification at igi.org



May 29, 2025

IGI Report Number **LG707549533**

Description **LABORATORY GROWN DIAMOND**

Shape and Cutting Style **PRINCESS CUT**

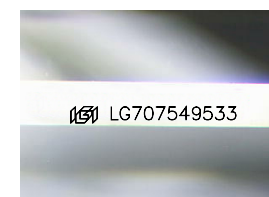
Measurements **7.58 X 7.43 X 5.31 MM**

GRADING RESULTS

Carat Weight **2.71 CARATS**

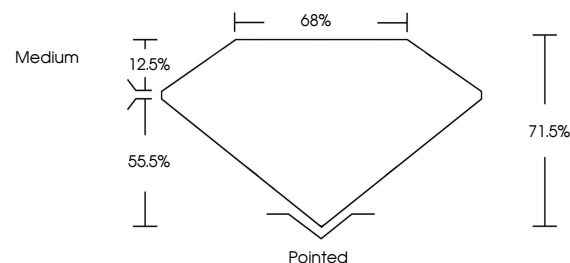
Color Grade **D**

Clarity Grade **VVS 2**

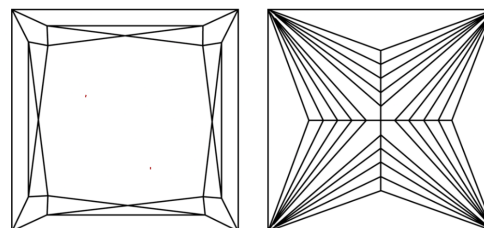


Sample Image Used

PROPORTIONS



CLARITY CHARACTERISTICS



KEY TO SYMBOLS

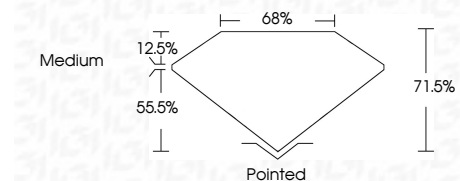
Red symbols indicate internal characteristics.
Green symbols indicate external characteristics.

COLOR

D E F G H I J Faint Very Light Light

CLARITY

IF	VS ¹⁻²	VS ¹⁻²	SI ¹⁻²	I ¹⁻³
Internally Flawless	Very Very Slightly Included	Very Slightly Included	Slightly Included	Included



ADDITIONAL GRADING INFORMATION

Polish **EXCELLENT**

Symmetry **EXCELLENT**

Fluorescence **NONE**

Inscription(s) **IGI LG707549533**

Comments: This Laboratory Grown Diamond was created by Chemical Vapor Deposition (CVD) growth process.
Type IIa



IGI



May 29, 2025
IGI Report No. LG707549533
PRINCESS CUT
7.58 X 7.43 X 5.31 MM
2.71 CARATS
D
Color Grade
VVS 2
Depth 71.05%
Table 65%
Medium
Pointed
EXCELLENT
EXCELLENT
NONE
IGI LG707549533
Comments: This Laboratory Grown Diamond was created by Chemical Vapor Deposition (CVD) growth process.
Type IIa