



**ELECTRONIC COPY**

## LABORATORY GROWN DIAMOND REPORT

|                         |                          |
|-------------------------|--------------------------|
| September 5, 2025       |                          |
| IGI Report Number       | LG707545249              |
| Description             | LABORATORY GROWN DIAMOND |
| Shape and Cutting Style | ROUND BRILLIANT          |
| Measurements            | 8.78 - 8.85 X 5.38 MM    |

## GRADING RESULTS

|               |             |
|---------------|-------------|
| Carat Weight  | 2.60 CARATS |
| Color Grade   | D           |
| Clarity Grade | VVS 2       |
| Cut Grade     | EXCELLENT   |

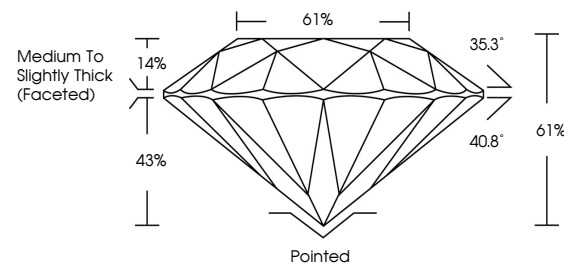
### ADDITIONAL GRADING INFORMATION

|                |   |
|----------------|---|
| Polish         | EXCELLENT   |
| Symmetry       | EXCELLENT   |
| Fluorescence   | NONE  |
| Inscription(s) |  LG707545249 |

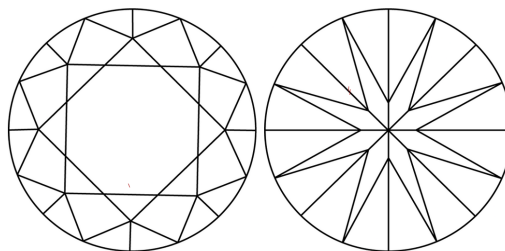
Comments: This Laboratory Grown Diamond was created by Chemical Vapor Deposition (CVD) growth process.  
Type IIa

LG707545249  
Report verification at [igi.org](https://igi.org)

## PROPORTIONS

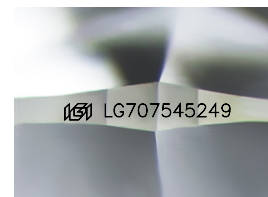


## CLARITY CHARACTERISTICS



## KEY TO SYMBOLS

Red symbols indicate internal characteristics.  
Green symbols indicate external characteristics.



Sample Image Used

**COLOR**

D E F G H I J Faint Very Light Light

## CLARITY

IF      VWS<sup>1-2</sup>      VS<sup>1-2</sup>      SI<sup>1-2</sup>      I<sup>1-3</sup>

| Internally<br>Flawless | Very Very<br>Slightly Included | Very<br>Slightly Included | Slightly<br>Included | Included |
|------------------------|--------------------------------|---------------------------|----------------------|----------|
|------------------------|--------------------------------|---------------------------|----------------------|----------|

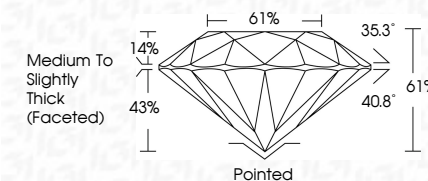
## LABORATORY GROWN DIAMOND REPORT



|                         |                                 |
|-------------------------|---------------------------------|
| September 5, 2025       |                                 |
| IGI Report Number       | <b>LG707545249</b>              |
| Description             | <b>LABORATORY GROWN DIAMOND</b> |
| Shape and Cutting Style | <b>ROUND BRILLIANT</b>          |
| Measurements            | <b>8.78 - 8.85 X 5.38 MM</b>    |

## GRADING RESULTS

|               |             |
|---------------|-------------|
| Carat Weight  | 2.60 CARATS |
| Color Grade   | D           |
| Clarity Grade | VVS 2       |
| Cut Grade     | EXCELLENT   |



### ADDITIONAL GRADING INFORMATION

|   |                           |
|---|---------------------------|
| Polish  | EXCELLENT                 |
| Symmetry  | EXCELLENT                 |
| Fluorescence  | NONE                      |
| Inscription(s)  | <del>LG</del> LG707545249 |
| <p>Comments: This Laboratory Grown Diamond was created by Chemical Vapor Deposition (CVD) growth process.</p> <p>Type IIa</p> |                           |



IG



© IGI 2020, International Gemological Institute

FD - 10 20

**www.igi.org**



THIS DOCUMENT WAS PRODUCED WITH THE FOLLOWING SECURITY MEASURES: SPECIAL DOCUMENT PAPER, INK SCREENS, WATERMARK, BACKGROUND DESIGNS, HOLOGRAM AND OTHER SECURITY FEATURES NOT LISTED AND DO EXCEED DOCUMENT SECURITY INDUSTRY GUIDELINE

September 5, 2025  
IGI Report No LG707545249  
ROUND BRILLIANT

|                       |   |                                    |
|-----------------------|---|------------------------------------|
| 8.78 - 8.95 X 5.38 MM |   | 2.60 CARATS                        |
| Color Grade           | D | VVS 2                              |
| Clarity Grade         |   | EXCELLENT                          |
| Cut Grade             |   | 61%                                |
| Depth                 |   | 61%                                |
| Table                 |   | Medium to Slightly Thick (Faceted) |
| Girdle                |   |                                    |
| Culet                 |   | Pointed                            |
| Polish                |   | EXCELLENT                          |
| Symmetry              |   | EXCELLENT                          |
| Fluorescence          |   | NONE                               |

**Comments:**  
This Laboratory Grown Diamond was created by Chemical Vapor Deposition (CVD) growth process.