



ELECTRONIC COPY

LG707543036 Report verification at igi.org



July 25, 2025
IGI Report Number LG707543036
Description LABORATORY GROWN DIAMOND
Shape and Cutting Style CUSHION MODIFIED BRILLIANT
Measurements 6.63 X 5.08 X 3.44 MM
GRADING RESULTS
Carat Weight 1.07 CARAT
Color Grade FANCY VIVID YELLOW
Clarity Grade VVS 2

LABORATORY GROWN DIAMOND REPORT

July 25, 2025
IGI Report Number LG707543036
Description LABORATORY GROWN DIAMOND
Shape and Cutting Style CUSHION MODIFIED BRILLIANT
Measurements 6.63 X 5.08 X 3.44 MM

GRADING RESULTS

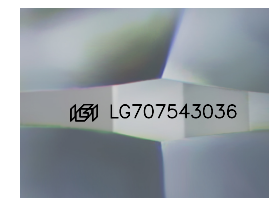
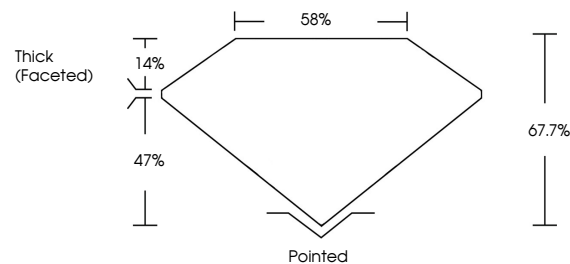
Carat Weight 1.07 CARAT
Color Grade FANCY VIVID YELLOW
Clarity Grade VVS 2

ADDITIONAL GRADING INFORMATION

Polish VERY GOOD
Symmetry VERY GOOD
Fluorescence NONE
Inscription(s) IGI LG707543036

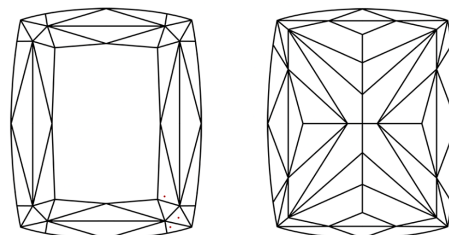
Comments: As Grown - No indication of post-growth treatment.
This Laboratory Grown Diamond was created by High Pressure High Temperature (HPHT) growth process.

PROPORTIONS



Sample Image Used

CLARITY CHARACTERISTICS



KEY TO SYMBOLS

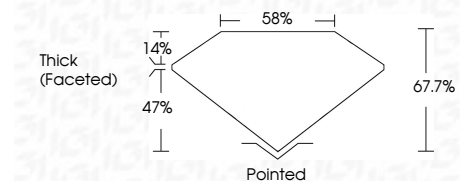
Red symbols indicate internal characteristics.
Green symbols indicate external characteristics.

COLOR

D E F G H I J Faint Very Light Light

CLARITY

IF WS 1-2 VS 1-2 SI 1-2 I 1-3
Internally Flawless Very Very Slightly Included Very Slightly Included Slightly Included Included



ADDITIONAL GRADING INFORMATION

Polish VERY GOOD
Symmetry VERY GOOD
Fluorescence NONE
Inscription(s) IGI LG707543036
Comments: As Grown - No indication of post-growth treatment.
This Laboratory Grown Diamond was created by High Pressure High Temperature (HPHT) growth process.



Summary of report details including date, report number, description, measurements, grading results, and additional information.

Comments: As Grown - No indication of post-growth treatment. This Laboratory Grown Diamond was created by High Pressure High Temperature (HPHT) growth process.