



**ELECTRONIC COPY**

## LABORATORY GROWN DIAMOND REPORT

|                         |                          |
|-------------------------|--------------------------|
| May 16, 2025            |                          |
| IGI Report Number       | LG707541350              |
| Description             | LABORATORY GROWN DIAMOND |
| Shape and Cutting Style | ROUND BRILLIANT          |
| Measurements            | 8.00 - 8.05 X 4.82 MM    |

## GRADING RESULTS

|               |            |
|---------------|------------|
| Carat Weight  | 1.90 CARAT |
| Color Grade   | E          |
| Clarity Grade | VS 1       |
| Cut Grade     | IDEAL      |

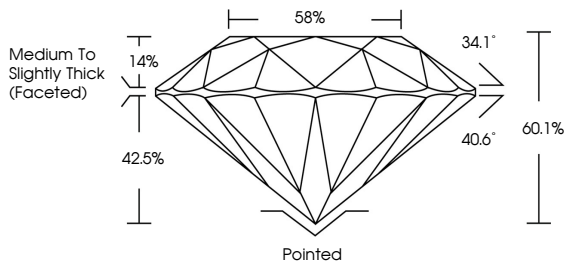
### ADDITIONAL GRADING INFORMATION

|                |   |
|----------------|---|
| Polish         | EXCELLENT   |
| Symmetry       | EXCELLENT   |
| Fluorescence   | NONE  |
| Inscription(s) |  LG707541350 |

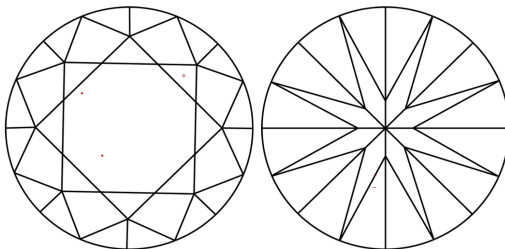
Comments: This Laboratory Grown Diamond was created by Chemical Vapor Deposition (CVD) growth process.  
Type IIa

LG707541350  
Report verification at [igi.org](https://igi.org)

## PROPORTIONS

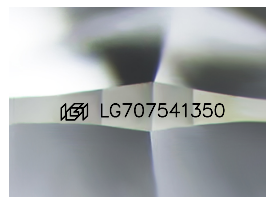


## CLARITY CHARACTERISTICS



## KEY TO SYMBOLS

Red symbols indicate internal characteristics.  
Green symbols indicate external characteristics.



Sample Image Used

**COLOR**

D E F G H I J Faint Very Light Light

## CLARITY

IF      WS<sup>1-2</sup>      VS<sup>1-2</sup>      SI<sup>1-2</sup>      I<sup>1-3</sup>

| Internally<br>Flawless | Very Very<br>Slightly Included | Very<br>Slightly Included | Slightly<br>Included | Included |
|------------------------|--------------------------------|---------------------------|----------------------|----------|
|------------------------|--------------------------------|---------------------------|----------------------|----------|

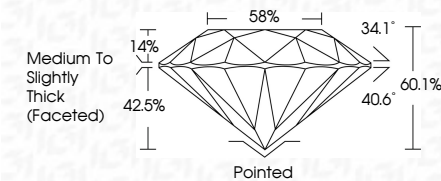
## LABORATORY GROWN DIAMOND REPORT



|                         |                          |
|-------------------------|--------------------------|
| May 16, 2025            |                          |
| IGI Report Number       | LG707541350              |
| Description             | LABORATORY GROWN DIAMOND |
| Shape and Cutting Style | ROUND BRILLIANT          |
| Measurements            | 8.00 - 8.05 X 4.82 MM    |

## GRADING RESULTS

|               |            |
|---------------|------------|
| Carat Weight  | 1.90 CARAT |
| Color Grade   | E          |
| Clarity Grade | VS 1       |
| Cut Grade     | IDEAL      |



### ADDITIONAL GRADING INFORMATION

|   |  |
|---|--|
| Polish  | EXCELLENT  |
| Symmetry  | EXCELLENT  |
| Fluorescence  | NONE   |
| Inscription(s)  |  LG707541350 |
| <p>Comments: This Laboratory Grown Diamond was created by Chemical Vapor Deposition (CVD) growth process.</p> <p>Type IIa</p> |  |



IG



© IGI 2020, International Gemological Institute

FD - 10 20

**www.igi.org**



THIS DOCUMENT WAS PRODUCED WITH THE FOLLOWING SECURITY MEASURES: SPECIAL DOCUMENT PAPER, INK SCREENS, WATERMARK, BACKGROUND DESIGNS, HOLOGRAM AND OTHER SECURITY FEATURES NOT LISTED AND DO EXCEED DOCUMENT SECURITY INDUSTRY GUIDELINE

|   |                                    |
|---|------------------------------------|
| May 16, 2026  | 1.90 CARAT                         |
| IGI Report No. LG707541360  | VSI                                |
| ROUND BRILLIANT   | IDEAL                              |
|   | 60.1%                              |
|   | 58%                                |
| 10.00 - 9.05 X 4.82 MM  | Medium to Slightly Thick (Faceted) |
| Color Weight  | Polished                           |
| Color Grade   | EXCELLENT                          |
| Clarity Grade   | EXCELLENT                          |
| Cut Grade   | NONE                               |
| Depth   | IGI LG707541360                    |
| Table   |                                    |
| Girdle  |                                    |
| Culet   |                                    |
| Polish  |                                    |
| Symmetry  |                                    |
| Fluorescence  |                                    |
| Inscriptions(s)   |                                    |
| Comments:   |                                    |
| The Laboratory Grown Diamond was created by Chemical Vapor Deposition (CVD) growth process. |                                    |
| Type IIa  |                                    |