



**ELECTRONIC COPY**

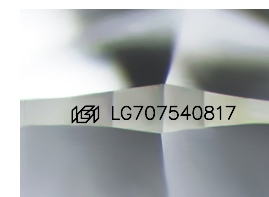
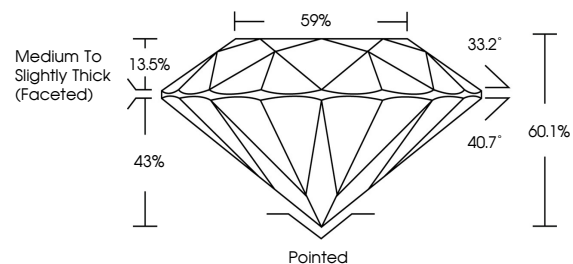
LG707540817  
Report verification at igi.org



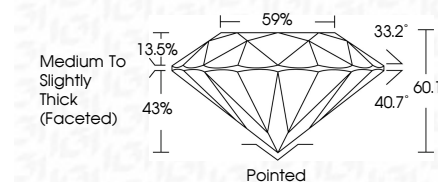
May 20, 2025  
IGI Report Number **LG707540817**  
Description **LABORATORY GROWN DIAMOND**  
Shape and Cutting Style **ROUND BRILLIANT**  
Measurements **12.61 - 12.65 X 7.60 MM**  
**GRADING RESULTS**  
Carat Weight **7.45 CARATS**  
Color Grade **FANCY BROWNISH PINK**  
Clarity Grade **VS 1**  
Cut Grade **IDEAL**

May 20, 2025  
IGI Report Number **LG707540817**  
Description **LABORATORY GROWN DIAMOND**  
Shape and Cutting Style **ROUND BRILLIANT**  
Measurements **12.61 - 12.65 X 7.60 MM**  
**GRADING RESULTS**  
Carat Weight **7.45 CARATS**  
Color Grade **FANCY BROWNISH PINK**  
Clarity Grade **VS 1**  
Cut Grade **IDEAL**

**PROPORTIONS**



Sample Image Used



**ADDITIONAL GRADING INFORMATION**

Polish **EXCELLENT**  
Symmetry **EXCELLENT**  
Fluorescence **SLIGHT**  
Inscription(s) **IGI LG707540817**

Comments: This Laboratory Grown Diamond was created by Chemical Vapor Deposition (CVD) growth process.  
Indications of post-growth treatment.

Secondary color: Pink

**COLOR**

D E F G H I J Faint Very Light Light

**CLARITY**

IF	VS <sup>1-2</sup>	VS <sup>1-2</sup>	SI <sup>1-2</sup>	I <sup>1-3</sup>
Internally Flawless	Very Very Slightly Included	Very Slightly Included	Slightly Included	Included

**ADDITIONAL GRADING INFORMATION**

Polish **EXCELLENT**  
Symmetry **EXCELLENT**  
Fluorescence **SLIGHT**  
Inscription(s) **IGI LG707540817**  
Comments: This Laboratory Grown Diamond was created by Chemical Vapor Deposition (CVD) growth process.  
Indications of post-growth treatment.  
Secondary color: Pink



**IGI**

May 20, 2025  
IGI Report No LG707540817  
**ROUND BRILLIANT**  
12.61 - 12.65 X 7.60 MM  
7.45 CARATS  
FANCY BROWNISH PINK  
VS 1  
IDEAL  
60.1%  
59%  
Medium To Slightly Thick (Faceted)  
Pointed  
EXCELLENT  
EXCELLENT  
SLIGHT  
IGI LG707540817  
Comments: This Laboratory Grown Diamond was created by Chemical Vapor Deposition (CVD) growth process.  
Indications of post-growth treatment.  
Secondary color: Pink