



**ELECTRONIC COPY**

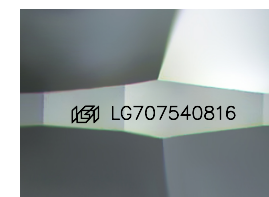
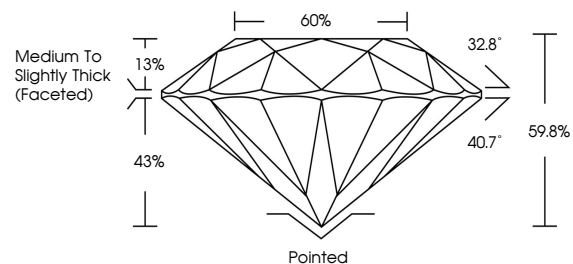
LG707540816  
Report verification at [igi.org](http://igi.org)



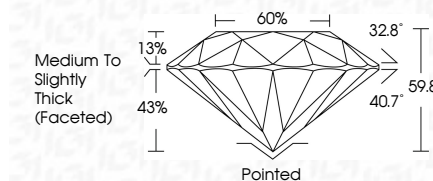
May 20, 2025  
IGI Report Number **LG707540816**  
Description **LABORATORY GROWN DIAMOND**  
Shape and Cutting Style **ROUND BRILLIANT**  
Measurements **13.45 - 13.54 X 8.08 MM**  
**GRADING RESULTS**  
Carat Weight **9.06 CARATS**  
Color Grade **FANCY BROWNISH PINK**  
Clarity Grade **VS 1**  
Cut Grade **IDEAL**

May 20, 2025  
IGI Report Number **LG707540816**  
Description **LABORATORY GROWN DIAMOND**  
Shape and Cutting Style **ROUND BRILLIANT**  
Measurements **13.45 - 13.54 X 8.08 MM**  
**GRADING RESULTS**  
Carat Weight **9.06 CARATS**  
Color Grade **FANCY BROWNISH PINK**  
Clarity Grade **VS 1**  
Cut Grade **IDEAL**

**PROPORTIONS**



Sample Image Used



**ADDITIONAL GRADING INFORMATION**  
Polish **EXCELLENT**  
Symmetry **EXCELLENT**  
Fluorescence **SLIGHT**  
Inscription(s) **IGI LG707540816**

Comments: This Laboratory Grown Diamond was created by Chemical Vapor Deposition (CVD) growth process.  
Indications of post-growth treatment.

**COLOR**

D E F G H I J Faint Very Light Light

**CLARITY**

IF	VS <sup>1-2</sup>	VS <sup>1-2</sup>	SI <sup>1-2</sup>	I <sup>1-3</sup>
Internally Flawless	Very Very Slightly Included	Very Slightly Included	Slightly Included	Included

**ADDITIONAL GRADING INFORMATION**

Polish **EXCELLENT**  
Symmetry **EXCELLENT**  
Fluorescence **SLIGHT**  
Inscription(s) **IGI LG707540816**  
Comments: This Laboratory Grown Diamond was created by Chemical Vapor Deposition (CVD) growth process.  
Indications of post-growth treatment.



May 20, 2025  
IGI Report No LG707540816  
**ROUND BRILLIANT**  
9.06 CARATS  
Carat Weight  
Color Grade **FANCY BROWNISH PINK**  
Clarity Grade **VS 1**  
Depth **IDEAL**  
Table **59.8%**  
Girdle **60%**  
Medium To Slightly Thick (Faceted)  
Culet **Pointed**  
Polish **EXCELLENT**  
Symmetry **EXCELLENT**  
Fluorescence **SLIGHT**  
Inscription(s) **IGI LG707540816**  
Comments: This Laboratory Grown Diamond was created by Chemical Vapor Deposition (CVD) growth process.  
Indications of post-growth treatment.