



ELECTRONIC COPY

LG707527472
Report verification at igi.org



May 28, 2025

IGI Report Number **LG707527472**

Description **LABORATORY GROWN DIAMOND**

Shape and Cutting Style **CUT CORNERED
RECTANGULAR MODIFIED
BRILLIANT**

Measurements **15.77 X 10.53 X 6.98 MM**

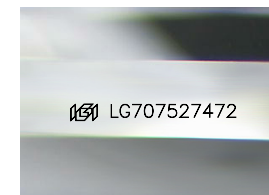
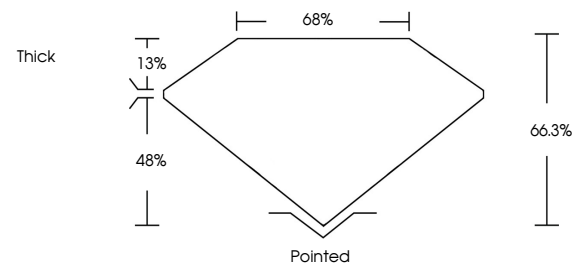
GRADING RESULTS

Carat Weight **10.08 CARATS**

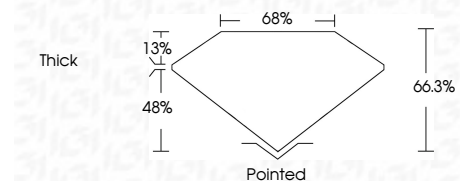
Color Grade **F**

Clarity Grade **VVS 2**

PROPORTIONS



Sample Image Used



ADDITIONAL GRADING INFORMATION

Polish **EXCELLENT**

Symmetry **EXCELLENT**

Fluorescence **NONE**

Inscription(s) **IGI LG707527472**

Comments: This Laboratory Grown Diamond was created by Chemical Vapor Deposition (CVD) growth process. Type IIa



IGI

COLOR

D E F G H I J Faint Very Light Light

CLARITY

IF	VS ¹⁻²	VS ¹⁻²	SI ¹⁻²	I ¹⁻³
Internally Flawless	Very Very Slightly Included	Very Slightly Included	Slightly Included	Included



May 28, 2025
IGI Report No LG707527472
CUT CORNERED RECT. MODIFIED BRILLIANT
15.77 X 10.53 X 6.98 MM
10.08 CARATS
F
VVS 2
66.3%
68%
Thick
Pointed
EXCELLENT
EXCELLENT
NONE
IGI LG707527472
Comments: This Laboratory Grown Diamond was created by Chemical Vapor Deposition (CVD) growth process. Type IIa