



**INTERNATIONAL
GEMOLOGICAL
INSTITUTE**

LABORATORY GROWN DIAMOND REPORT

May 15, 2025
 IGI Report Number **LG707521494**
 Description **LABORATORY GROWN DIAMOND**
 Shape and Cutting Style **TRIANGULAR BRILLIANT**
 Measurements **5.79 X 5.41 X 2.87 MM**

GRADING RESULTS

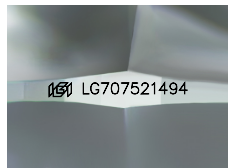
Carat Weight **0.49 CARAT**
 Color Grade **F**
 Clarity Grade **VS 2**

ADDITIONAL GRADING INFORMATION

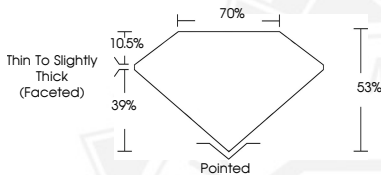
Polish **VERY GOOD**
 Symmetry **VERY GOOD**
 Fluorescence **NONE**
 Inscription(s) **IGI LG707521494**

Comments: This Laboratory Grown Diamond was created by
 Chemical Vapor Deposition (CVD) growth process.
 Type IIa

ELECTRONIC COPY



Sample Image Used



May 15, 2025
 IGI Report Number **LG707521494**
TRIANGULAR BRILLIANT
LABORATORY GROWN DIAMOND
5.79 X 5.41 X 2.87 MM
 Carat Weight **0.49 CARAT**
 Color Grade **F**
 Clarity Grade **VS 2**
 Polish **VERY GOOD**
 Symmetry **VERY GOOD**
 Fluorescence **NONE**
 Inscription(s) **IGI LG707521494**

Comments: This Laboratory Grown Diamond was created by
 Chemical Vapor Deposition (CVD)
 growth process. Type IIa



May 15, 2025
 IGI Report Number **LG707521494**
TRIANGULAR BRILLIANT
LABORATORY GROWN DIAMOND
5.79 X 5.41 X 2.87 MM
 Carat Weight **0.49 CARAT**
 Color Grade **F**
 Clarity Grade **VS 2**
 Polish **VERY GOOD**
 Symmetry **VERY GOOD**
 Fluorescence **NONE**
 Inscription(s) **IGI LG707521494**

Comments: This Laboratory Grown Diamond was created by
 Chemical Vapor Deposition (CVD)
 growth process. Type IIa

THIS DOCUMENT WAS PRODUCED WITH THE FOLLOWING SECURITY MEASURES: SPECIAL DOCUMENT PAPER, INK SCREENS, WATERMARK, BACKGROUND DESIGN, HOLOGRAM AND OTHER SECURITY FEATURES NOT LISTED AND DO EXCEED DOCUMENT SECURITY INDUSTRY GUIDELINES.

For terms & conditions and to verify this report, please visit www.igi.org