



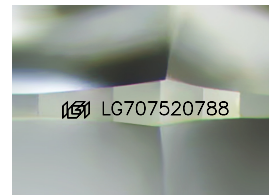
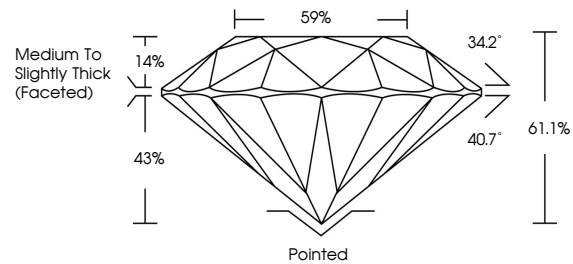
**INTERNATIONAL
GEMOLOGICAL
INSTITUTE**

ELECTRONIC COPY

LABORATORY GROWN DIAMOND REPORT

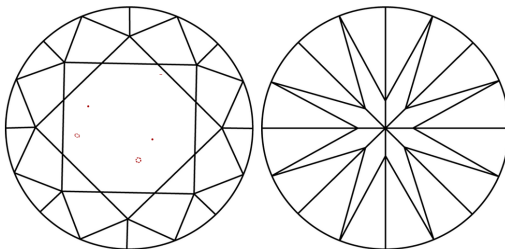
LG707520788
Report verification at igi.org

PROPORTIONS



Sample Image Used

CLARITY CHARACTERISTICS



KEY TO SYMBOLS

Red symbols indicate internal characteristics.
Green symbols indicate external characteristics.

COLOR

D E F G H I J Faint Very Light Light

CLARITY

IF WS¹⁻² VS¹⁻² SI¹⁻² |¹⁻³

Internally Flawless	Very Very Slightly Included	Very Slightly Included	Slightly Included	Included
------------------------	--------------------------------	---------------------------	----------------------	----------



© IGI 2020, International Gemological Institute

FD - 10 20

www.igi.org

LABORATORY GROWN DIAMOND REPORT



May 15, 2025

IGI Report Number **LG707520788**

Description	LABORATORY GROWN DIAMOND
-------------	--------------------------

Shape and Cutting Style **ROUND BRILLIANT**

Measurements 8.11 - 8.17 X 4.98 MM

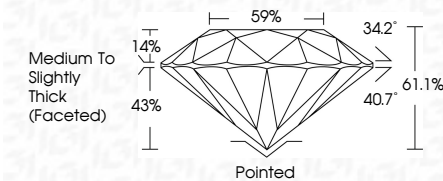
GRADING RESULTS

Carat Weight **2.05 CARATS**

Color Grade	D
-------------	---

Clarity Grade VS 1

Cut Grade **IDEAL**



ADDITIONAL GRADING INFORMATION

Polish **EXCELLENCE**Symmetry **EXCELLENCE**

Fluorescence NONI

Inscription(s) LG70752078

Comments: This Laboratory Grown Diamond was created by Chemical Vapor Deposition (CVD) growth process.
Type IIa



IG

May 15, 2025	IGL Report No. IGL7620788	ROUND BRILLIANT	1.811 - 8.17 X 4.98 MM	2.05 CARATS	D	VS 1	IDEAL	61.1%	59%	Medium to Slightly Thick (faceted)	Ported	EXCELLENT	NONE	IGI LG707620788	Comments: This is a Crown Diamond was created by Gemvara (CVD) growth process. Type IIG
				Color Weight	Color Grade	Clarity Grade	Cut Grade	Depth	Table	Girdle	Fluorescence	Symmetry	Inscriptions(s)		