



**INTERNATIONAL
GEMOLOGICAL
INSTITUTE**

ELECTRONIC COPY

LG707516680
Report verification at igi.org

LABORATORY GROWN DIAMOND REPORT



May 27, 2025

IGI Report Number **LG707516680**Description **LABORATORY GROWN DIAMOND**Shape and Cutting Style **EMERALD CUT**

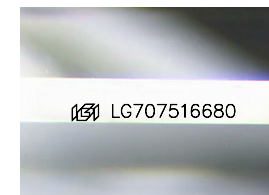
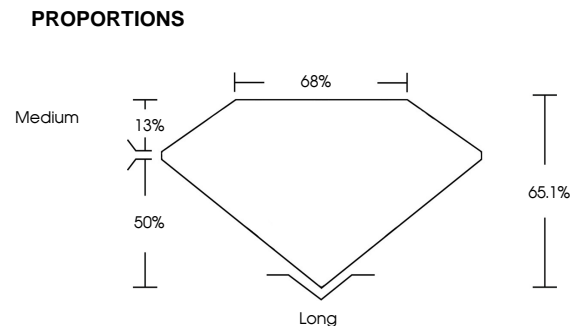
Measurements 7.19 X 4.87 X 3.17 MM

GRADING RESULTS

Carat Weight **1.06 CARAT**

Color Grade D

Clarity Grade VS 1



Sample Image Used

COLOR

D E F G H I J Faint Very Light Light

CLARITY

IF WS¹⁻² VS¹⁻² SI¹⁻² |¹⁻³

Internally Flawless	Very Very Slightly Included	Very Slightly Included	Slightly Included	Included
------------------------	--------------------------------	---------------------------	----------------------	----------

ADDITIONAL GRADING INFORMATION

Polish VERY GOOD

Symmetry VERY GOODFluorescence **NONE**Inscription(s) LG707516680

Comments: This Laboratory Grown Diamond was created by Chemical Vapor Deposition (CVD) growth process.
Type IIa



© IGI 2020, International Gemmological Institute

FD - 10 20

www.igi.org

THIS DOCUMENT WAS PRODUCED WITH THE FOLLOWING SECURITY MEASURES: SPECIAL DOCUMENT PAPER, INK SCREENS, WATERMARK BACKGROUND DESIGN, HOLOGRAM AND OTHER SECURITY FEATURES NOT LISTED AND DO EXCEED DOCUMENT SECURITY INDUSTRY GUIDELINES

May 27, 2025
GI Report No LG707516680

Report No	LS0707516800
EXPAND CUT	
Color Grade	VS 1
Depth	65.1%
Table	68%
Grade	Medium
Cutlet	Long
Polish	VERY GOOD
Symmetry	VERY GOOD
Fluorescence	NONE
Weight (Carats)	1.06 CARAT
Dimensions (mm)	9.19 X 4.87 X 3.17 MM

Comments:
This Laboratory Grown Diamond was
created by Chemical Vapor Deposition
(CVD) growth process.