



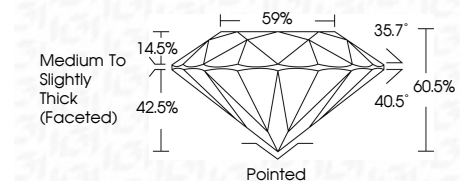
**ELECTRONIC COPY**

LG707516241  
Report verification at igi.org



May 21, 2025  
IGI Report Number **LG707516241**  
Description **LABORATORY GROWN DIAMOND**  
Shape and Cutting Style **ROUND BRILLIANT**  
Measurements **10.22 - 10.29 X 6.20 MM**

**GRADING RESULTS**  
Carat Weight **4.02 CARATS**  
Color Grade **E**  
Clarity Grade **SI 1**  
Cut Grade **IDEAL**



**ADDITIONAL GRADING INFORMATION**  
Polish **EXCELLENT**  
Symmetry **EXCELLENT**  
Fluorescence **NONE**  
Inscription(s) **IGI LG707516241**  
Comments: This Laboratory Grown Diamond was created by Chemical Vapor Deposition (CVD) growth process. Type IIa



May 21, 2025  
IGI Report No LG707516241  
**ROUND BRILLIANT**  
10.22 - 10.29 X 6.20 MM  
4.02 CARATS  
E  
SI 1  
IDEAL  
60.5%  
59%  
Medium To Slightly Thick (Faceted)  
Pointed  
EXCELLENT  
EXCELLENT  
NONE  
IGI LG707516241  
Comments: This Laboratory Grown Diamond was created by Chemical Vapor Deposition (CVD) growth process. Type IIa

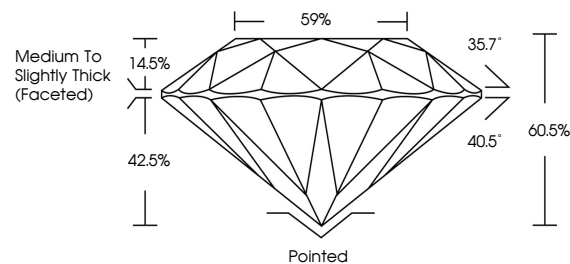
May 21, 2025  
IGI Report Number **LG707516241**  
Description **LABORATORY GROWN DIAMOND**  
Shape and Cutting Style **ROUND BRILLIANT**  
Measurements **10.22 - 10.29 X 6.20 MM**

**GRADING RESULTS**  
Carat Weight **4.02 CARATS**  
Color Grade **E**  
Clarity Grade **SI 1**  
Cut Grade **IDEAL**

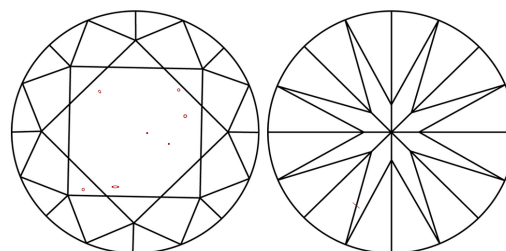
**ADDITIONAL GRADING INFORMATION**  
Polish **EXCELLENT**  
Symmetry **EXCELLENT**  
Fluorescence **NONE**  
Inscription(s) **IGI LG707516241**

Comments: This Laboratory Grown Diamond was created by Chemical Vapor Deposition (CVD) growth process. Type IIa

**PROPORTIONS**

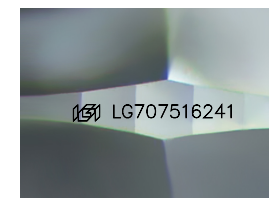


**CLARITY CHARACTERISTICS**



**KEY TO SYMBOLS**

Red symbols indicate internal characteristics.  
Green symbols indicate external characteristics.



Sample Image Used

**COLOR**

D E F G H I J Faint Very Light Light

**CLARITY**

IF WS<sup>1-2</sup> VS<sup>1-2</sup> SI<sup>1-2</sup> I<sup>1-3</sup>  
Internally Flawless Very Very Slightly Included Very Slightly Included Slightly Included Included

