



**INTERNATIONAL
GEMOLOGICAL
INSTITUTE**

ELECTRONIC COPY

LG707516172
Report verification at igi.org

LABORATORY GROWN DIAMOND REPORT



May 13, 2025

IGI Report Number **LG707516172**

Description	LABORATORY GROWN DIAMOND
-------------	--------------------------

Shape and Cutting Style **PEAR BRILLIANT**

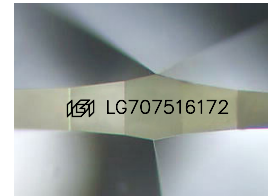
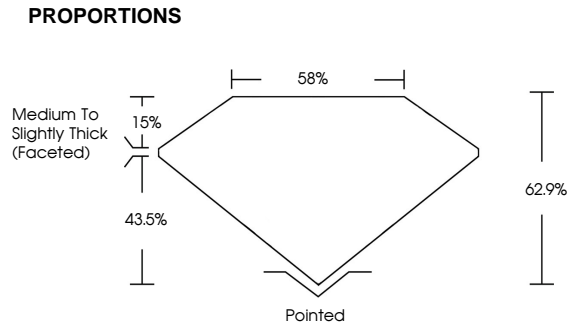
Measurements 11.53 X 7.39 X 4.65 MM

GRADING RESULTS

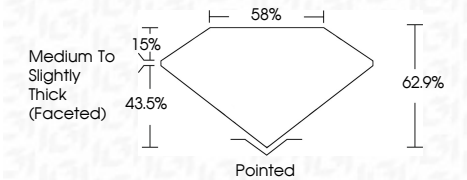
Carat Weight **2.36 CARATS**

Color Grade	E
-------------	---

Clarity Grade VS 2



Sample Image Used



COLOR

D E F G H I J Faint Very Light Light

CLARITY

IF WS¹⁻² VS¹⁻² SI¹⁻² I¹⁻³

Internally Flawless	Very Very Slightly Included	Very Slightly Included	Slightly Included	Included
------------------------	--------------------------------	---------------------------	----------------------	----------



© IGI 2020, International Gemological Institute

FD - 10 20



THIS DOCUMENT WAS PRODUCED WITH THE FOLLOWING SECURITY MEASURES: SPECIAL DOCUMENT PAPER, INK SCREENS, WATERMARK BACKGROUND DESIGNS, HOLOGRAM AND OTHER SECURITY FEATURES NOT LISTED AND DO EXCEED DOCUMENT SECURITY INDUSTRY GUIDELINES



IGI

May 19, 2025	IGI Report No. LG70751672	PEARL BRILLIANT	11.63 X 7.39 X 4.65 MM	2.36 CARATS	VVS 2	62.9%	56%	Medium to Slightly Thick (faced)	Pointed	EXCELLENT	EXCELLENT	NONE	IGI LG70751672	
			Carat Weight											
			Color Grade											
			Clarity Grade											
			Depth											
			Table											
			Grade											
			Culet											
			Polish											
			Symmetry											
			Fluorescence											
			Inscriptions											

Comments:
This Laboratory Grown Diamond was created by Chemical Vapor Deposition (CVD) growth process.

Type IId

This Laboratory Grown Diamond was created by Chemical Vapor Deposition (CVD) growth process.
Type IIa

1/2013