

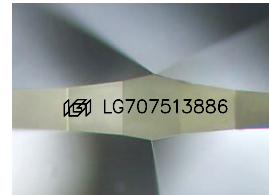
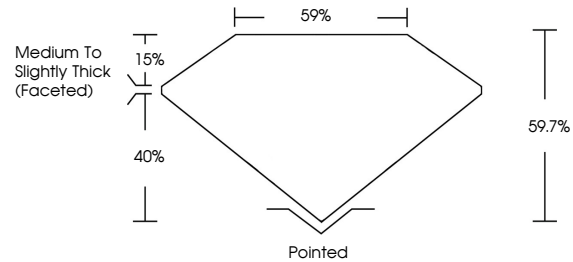


**INTERNATIONAL
GEMOLOGICAL
INSTITUTE**

ELECTRONIC COPY

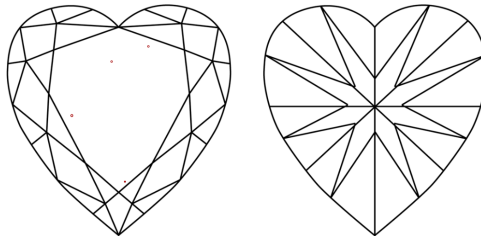
LG707513886
Report verification at igi.org

PROPORTIONS



Sample Image Used

CLARITY CHARACTERISTICS



KEY TO SYMBOLS

Red symbols indicate internal characteristics.
Green symbols indicate external characteristics.

COLOR

D E F G H I J Faint Very Light Light

CLARITY

IF	WS ¹⁻²	VS ¹⁻²	SI ¹⁻²	I ¹⁻³
----	-------------------	-------------------	-------------------	------------------

Internally Flawless	Very Very Slightly Included	Very Slightly Included	Slightly Included	Included
------------------------	--------------------------------	---------------------------	----------------------	----------



© IGI 2020, International Gemological Institute

FD - 10 20

LABORATORY GROWN DIAMOND REPORT



May 24, 2025

IGI Report Number **LG707513886**

Description	LABORATORY GROWN DIAMOND
-------------	--------------------------

Shape and Cutting Style **HEART BRILLIANT**

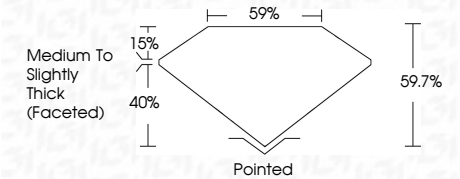
Measurements 7.90 X 8.60 X 5.13 MM

GRADING RESULTS

Carat Weight **2.07 CARATS**

Color Grade D

Clarity Grade **VS 1**



ADDITIONAL GRADING INFORMATION

Polish **EXCELLENT**Symmetry **VERY GOOD**Fluorescence **NONE**

Inscription(s) **131 LG707513886**

Comments: This Laboratory Grown Diamond was created by Chemical Vapor Deposition (CVD) growth process.
Type IIa



IGI

May 24, 2025	IGI Report No. LG707513886	
HEART BRILLIANT		
	2.07 CARATS	
	D	VS 1
		59.7%
		59%
	Medium to Slightly Thick (Faceted)	
	Cutlet	Polished
	Polish	EXCELLENT
	Symmetry	VERY GOOD
	Fluorescence	NONE
	Inscriptions(s)	IGI LG707513886
Comments:		
This Laboratory Grown Diamond was created by Chemical Vapor Deposition (CVD) growth process.		
Type IId		

This Laboratory Grown Diamond was created by Chemical Vapor Deposition (CVD) growth process.
Type IIa

www.igi.org