



ELECTRONIC COPY

LG707511836
Report verification at igi.org



May 6, 2026

IGI Report Number **LG707511836**

Description **LABORATORY GROWN DIAMOND**

Shape and Cutting Style **FREEFORM FACETED**

Measurements **11.73 X 8.85 X 5.77 MM**

GRADING RESULTS

Carat Weight **4.03 CARATS**

Color Grade **D**

Clarity Grade **VVS 1**

May 6, 2026

IGI Report Number **LG707511836**

Description **LABORATORY GROWN DIAMOND**

Shape and Cutting Style **FREEFORM FACETED**

Measurements **11.73 X 8.85 X 5.77 MM**

GRADING RESULTS

Carat Weight **4.03 CARATS**

Color Grade **D**

Clarity Grade **VVS 1**

ADDITIONAL GRADING INFORMATION

Polish **EXCELLENT**

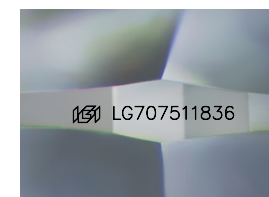
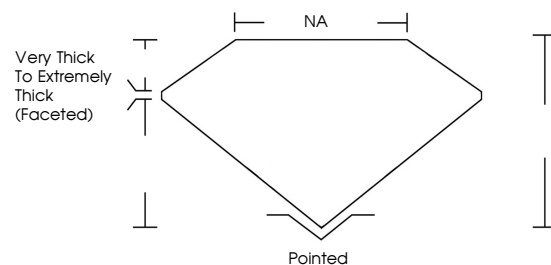
Symmetry **EXCELLENT**

Fluorescence **NONE**

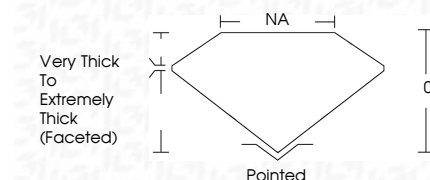
Inscription(s) **IGI LG707511836**

Comments: This Laboratory Grown Diamond was created by Chemical Vapor Deposition (CVD) growth process.
Type IIa

PROPORTIONS



Sample Image Used



COLOR

D E F G H I J Faint Very Light Light

CLARITY

FL	IF	VVS ¹⁻²	VS ¹⁻²	SI ¹⁻²	I ¹⁻³
Flawless	Internally Flawless	Very Very Slightly Included	Very Slightly Included	Slightly Included	Included

ADDITIONAL GRADING INFORMATION

Polish **EXCELLENT**

Symmetry **EXCELLENT**

Fluorescence **NONE**

Inscription(s) **IGI LG707511836**

Comments: This Laboratory Grown Diamond was created by Chemical Vapor Deposition (CVD) growth process.
Type IIa



May 6, 2026
IGI Report No LG707511836
FREEFORM FACETED

11.73 X 8.85 X 5.77 MM
4.03 CARATS
D
VVS 1
NA
Very Thick to Extremely Thick (Faceted)

Pointed
EXCELLENT
EXCELLENT
NONE
IGI LG707511836

Comments: This Laboratory Grown Diamond was created by Chemical Vapor Deposition (CVD) growth process.
Type IIa