



**LABORATORY GROWN DIAMOND REPORT**

April 10, 2026  
IGI Report Number **LG707511754**  
Description **LABORATORY GROWN DIAMOND**  
Shape and Cutting Style **FREEFORM FACETED**  
Measurements **7.07 X 5.18 X 3.53 MM**

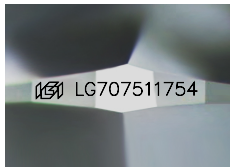
**GRADING RESULTS**

Carat Weight **0.86 CARAT**  
Color Grade **E**  
Clarity Grade **VVS 2**

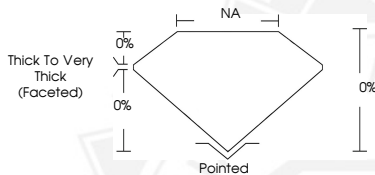
**ADDITIONAL GRADING INFORMATION**

Polish **EXCELLENT**  
Symmetry **VERY GOOD**  
Fluorescence **NONE**  
Inscription(s) **IGI LG707511754**

Comments: This Laboratory Grown Diamond was created by Chemical Vapor Deposition (CVD) growth process. Type IIa



Sample Image Used



April 10, 2026  
IGI Report Number **LG707511754**  
**FREEFORM FACETED**  
**LABORATORY GROWN DIAMOND**  
**7.07 X 5.18 X 3.53 MM**  
Carat Weight **0.86 CARAT**  
Color Grade **E**  
Clarity Grade **VVS 2**  
Polish **EXCELLENT**  
Symmetry **VERY GOOD**  
Fluorescence **NONE**  
Inscription(s) **IGI LG707511754**

Comments: This Laboratory Grown Diamond was created by Chemical Vapor Deposition (CVD) growth process. Type IIa



April 10, 2026  
IGI Report Number **LG707511754**  
**FREEFORM FACETED**  
**LABORATORY GROWN DIAMOND**  
**7.07 X 5.18 X 3.53 MM**  
Carat Weight **0.86 CARAT**  
Color Grade **E**  
Clarity Grade **VVS 2**  
Polish **EXCELLENT**  
Symmetry **VERY GOOD**  
Fluorescence **NONE**  
Inscription(s) **IGI LG707511754**

Comments: This Laboratory Grown Diamond was created by Chemical Vapor Deposition (CVD) growth process. Type IIa



THIS DOCUMENT WAS PRODUCED WITH THE FOLLOWING SECURITY MEASURES: SPECIAL DOCUMENT PAPER, INK SCREENS, WATERMARK, BACKGROUND DESIGNS, HOLOGRAM AND OTHER SECURITY FEATURES NOT LISTED AND DO EXCEED DOCUMENT SECURITY INDUSTRY GUIDELINES.