



ELECTRONIC COPY

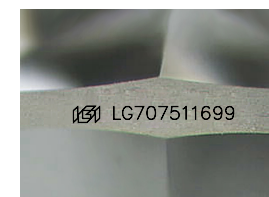
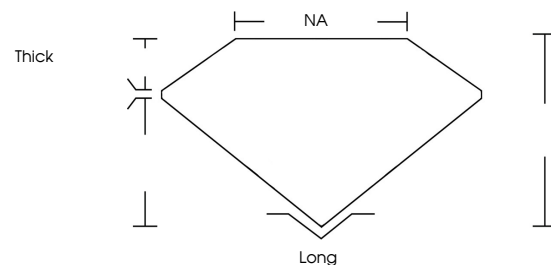
LG707511699
Report verification at igi.org



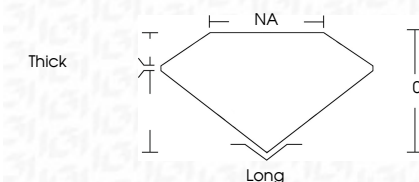
March 10, 2026
IGI Report Number **LG707511699**
Description **LABORATORY GROWN DIAMOND**
Shape and Cutting Style **FREEFORM FACETED**
Measurements **10.20 X 16.53 X 4.44 MM**
GRADING RESULTS
Carat Weight **6.67 CARATS**
Color Grade **F**
Clarity Grade **VVS 2**

March 10, 2026
IGI Report Number **LG707511699**
Description **LABORATORY GROWN DIAMOND**
Shape and Cutting Style **FREEFORM FACETED**
Measurements **10.20 X 16.53 X 4.44 MM**
GRADING RESULTS
Carat Weight **6.67 CARATS**
Color Grade **F**
Clarity Grade **VVS 2**

PROPORTIONS



Sample Image Used



ADDITIONAL GRADING INFORMATION

Polish **EXCELLENT**
Symmetry **EXCELLENT**
Fluorescence **NONE**
Inscription(s) **IGI LG707511699**

Comments: This Laboratory Grown Diamond was created by Chemical Vapor Deposition (CVD) growth process.
Type IIa

ADDITIONAL GRADING INFORMATION

Polish **EXCELLENT**
Symmetry **EXCELLENT**
Fluorescence **NONE**
Inscription(s) **IGI LG707511699**
Comments: This Laboratory Grown Diamond was created by Chemical Vapor Deposition (CVD) growth process.
Type IIa

COLOR

D E F G H I J Faint Very Light Light

CLARITY

FL	IF	VVS ¹⁻²	VS ¹⁻²	SI ¹⁻²	I ¹⁻³
Flawless	Internally Flawless	Very Very Slightly Included	Very Slightly Included	Slightly Included	Included



IGI



March 10, 2026
IGI Report No LG707511699
FREEFORM FACETED
10.20 X 16.53 X 4.44 MM
6.67 CARATS
F
VVS 2
0%
NA
Thick
Long
EXCELLENT
EXCELLENT
NONE
IGI LG707511699

Comments: This Laboratory Grown Diamond was created by Chemical Vapor Deposition (CVD) growth process.
Type IIa