



ELECTRONIC COPY

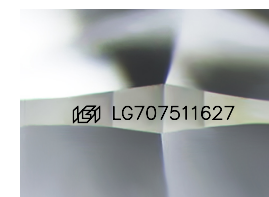
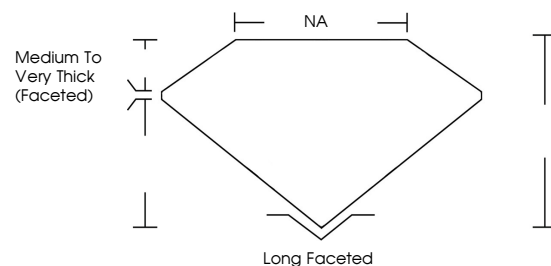
LG707511627
Report verification at igi.org



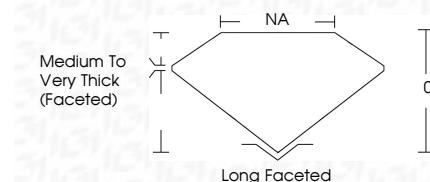
February 11, 2026
IGI Report Number **LG707511627**
Description **LABORATORY GROWN DIAMOND**
Shape and Cutting Style **FREEFORM FACETED**
Measurements **7.58 X 5.69 X 3.16 MM**
GRADING RESULTS
Carat Weight **1.35 CARAT**
Color Grade **E**
Clarity Grade **VVS 1**

February 11, 2026
IGI Report Number **LG707511627**
Description **LABORATORY GROWN DIAMOND**
Shape and Cutting Style **FREEFORM FACETED**
Measurements **7.58 X 5.69 X 3.16 MM**
GRADING RESULTS
Carat Weight **1.35 CARAT**
Color Grade **E**
Clarity Grade **VVS 1**

PROPORTIONS



Sample Image Used



ADDITIONAL GRADING INFORMATION

Polish **EXCELLENT**
Symmetry **EXCELLENT**
Fluorescence **NONE**
Inscription(s) **IGI LG707511627**

Comments: This Laboratory Grown Diamond was created by Chemical Vapor Deposition (CVD) growth process.
Type IIa

ADDITIONAL GRADING INFORMATION

Polish **EXCELLENT**
Symmetry **EXCELLENT**
Fluorescence **NONE**
Inscription(s) **IGI LG707511627**
Comments: This Laboratory Grown Diamond was created by Chemical Vapor Deposition (CVD) growth process.
Type IIa

COLOR

D E F G H I J Faint Very Light Light

CLARITY

FL	IF	VVS ¹⁻²	VS ¹⁻²	SI ¹⁻²	I ¹⁻³
Flawless	Internally Flawless	Very Very Slightly Included	Very Slightly Included	Slightly Included	Included



IGI



February 11, 2026
IGI Report No. LG707511627
FREEFORM FACETED
7.58 X 5.69 X 3.16 MM
1.35 CARAT
E
VVS 1
0%
NA
Medium to Very Thick (Faceted)
Long Faceted
EXCELLENT
EXCELLENT
NONE
IGI LG707511627

Comments: This Laboratory Grown Diamond was created by Chemical Vapor Deposition (CVD) growth process.
Type IIa