



ELECTRONIC COPY

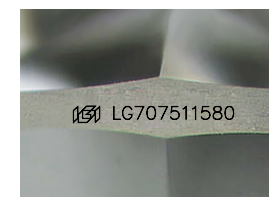
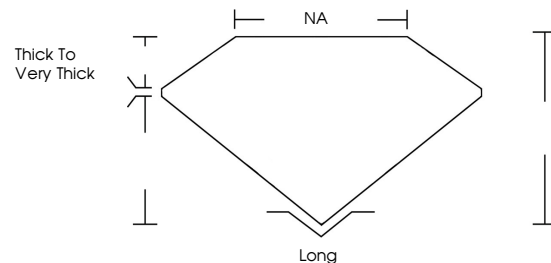
LG707511580
Report verification at igi.org



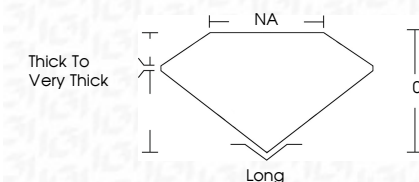
January 27, 2026
IGI Report Number **LG707511580**
Description **LABORATORY GROWN DIAMOND**
Shape and Cutting Style **FREEFORM FACETED**
Measurements **11.21 X 6.99 X 4.26 MM**
GRADING RESULTS
Carat Weight **3.45 CARATS**
Color Grade **F**
Clarity Grade **VVS 2**

January 27, 2026
IGI Report Number **LG707511580**
Description **LABORATORY GROWN DIAMOND**
Shape and Cutting Style **FREEFORM FACETED**
Measurements **11.21 X 6.99 X 4.26 MM**
GRADING RESULTS
Carat Weight **3.45 CARATS**
Color Grade **F**
Clarity Grade **VVS 2**

PROPORTIONS



Sample Image Used



ADDITIONAL GRADING INFORMATION
Polish **EXCELLENT**
Symmetry **EXCELLENT**
Fluorescence **NONE**
Inscription(s) **IGI LG707511580**

Comments: This Laboratory Grown Diamond was created by Chemical Vapor Deposition (CVD) growth process.
Type IIa

COLOR

D E F G H I J Faint Very Light Light

CLARITY

FL	IF	VVS ¹⁻²	VS ¹⁻²	SI ¹⁻²	I ¹⁻³
Flawless	Internally Flawless	Very Very Slightly Included	Very Slightly Included	Slightly Included	Included

ADDITIONAL GRADING INFORMATION

Polish **EXCELLENT**
Symmetry **EXCELLENT**
Fluorescence **NONE**
Inscription(s) **IGI LG707511580**
Comments: This Laboratory Grown Diamond was created by Chemical Vapor Deposition (CVD) growth process.
Type IIa



IGI



January 27, 2026
IGI Report No LG707511580
FREEFORM FACETED
11.21 X 6.99 X 4.26 MM
3.45 CARATS
F
VVS 2
0%
NA
Thick To Very Thick
Long
EXCELLENT
EXCELLENT
NONE
IGI LG707511580

Comments: This Laboratory Grown Diamond was created by Chemical Vapor Deposition (CVD) growth process.
Type IIa