



ELECTRONIC COPY

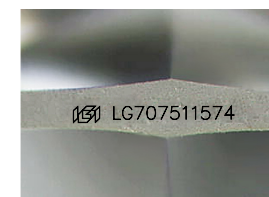
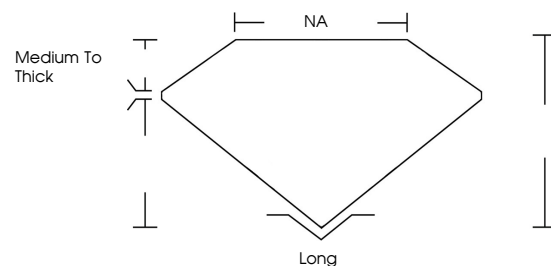
LG707511574
Report verification at igi.org



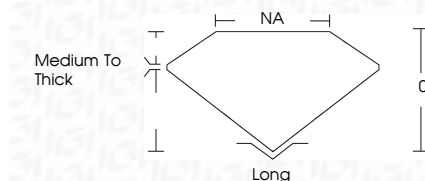
January 27, 2026
IGI Report Number **LG707511574**
Description **LABORATORY GROWN DIAMOND**
Shape and Cutting Style **FREEFORM FACETED**
Measurements **9.79 X 7.74 X 4.56 MM**
GRADING RESULTS
Carat Weight **3.15 CARATS**
Color Grade **H**
Clarity Grade **VVS 2**

January 27, 2026
IGI Report Number **LG707511574**
Description **LABORATORY GROWN DIAMOND**
Shape and Cutting Style **FREEFORM FACETED**
Measurements **9.79 X 7.74 X 4.56 MM**
GRADING RESULTS
Carat Weight **3.15 CARATS**
Color Grade **H**
Clarity Grade **VVS 2**

PROPORTIONS



Sample Image Used



ADDITIONAL GRADING INFORMATION
Polish **EXCELLENT**
Symmetry **EXCELLENT**
Fluorescence **NONE**
Inscription(s) **IGI LG707511574**

Comments: This Laboratory Grown Diamond was created by Chemical Vapor Deposition (CVD) growth process.
Type IIa

COLOR

D E F G H I J Faint Very Light Light

CLARITY

FL	IF	VVS ¹⁻²	VS ¹⁻²	SI ¹⁻²	I ¹⁻³
Flawless	Internally Flawless	Very Very Slightly Included	Very Slightly Included	Slightly Included	Included

ADDITIONAL GRADING INFORMATION

Polish **EXCELLENT**
Symmetry **EXCELLENT**
Fluorescence **NONE**
Inscription(s) **IGI LG707511574**
Comments: This Laboratory Grown Diamond was created by Chemical Vapor Deposition (CVD) growth process.
Type IIa



January 27, 2026
IGI Report No LG707511574
FREEFORM FACETED
9.79 X 7.74 X 4.56 MM
3.15 CARATS
H
VVS 2
0%
NA
Medium To Thick
Long
EXCELLENT
EXCELLENT
NONE
IGI LG707511574
Comments: This Laboratory Grown Diamond was created by Chemical Vapor Deposition (CVD) growth process.
Type IIa