



**ELECTRONIC COPY**

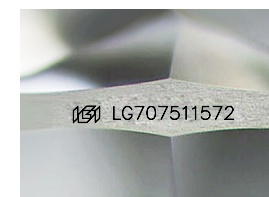
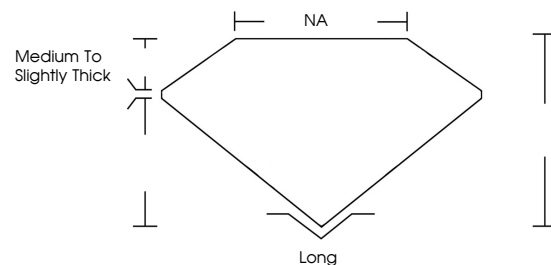
LG707511572  
Report verification at igi.org



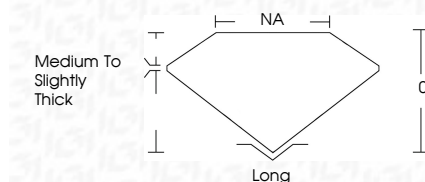
January 17, 2026  
IGI Report Number **LG707511572**  
Description **LABORATORY GROWN DIAMOND**  
Shape and Cutting Style **FREEFORM FACETED**  
Measurements **9.48 X 6.67 X 3.78 MM**  
**GRADING RESULTS**  
Carat Weight **2.40 CARATS**  
Color Grade **E**  
Clarity Grade **VVS 2**

January 17, 2026  
IGI Report Number **LG707511572**  
Description **LABORATORY GROWN DIAMOND**  
Shape and Cutting Style **FREEFORM FACETED**  
Measurements **9.48 X 6.67 X 3.78 MM**  
**GRADING RESULTS**  
Carat Weight **2.40 CARATS**  
Color Grade **E**  
Clarity Grade **VVS 2**

**PROPORTIONS**



Sample Image Used



**ADDITIONAL GRADING INFORMATION**

Polish **EXCELLENT**  
Symmetry **EXCELLENT**  
Fluorescence **NONE**  
Inscription(s) **IGI LG707511572**

Comments: This Laboratory Grown Diamond was created by Chemical Vapor Deposition (CVD) growth process.  
Type IIa

**ADDITIONAL GRADING INFORMATION**

Polish **EXCELLENT**  
Symmetry **EXCELLENT**  
Fluorescence **NONE**  
Inscription(s) **IGI LG707511572**  
Comments: This Laboratory Grown Diamond was created by Chemical Vapor Deposition (CVD) growth process.  
Type IIa

**COLOR**

D E F G H I J Faint Very Light Light

**CLARITY**

FL	IF	VVS <sup>1-2</sup>	VS <sup>1-2</sup>	SI <sup>1-2</sup>	I <sup>1-3</sup>
Flawless	Internally Flawless	Very Very Slightly Included	Very Slightly Included	Slightly Included	Included



**IGI**



January 17, 2026  
IGI Report No LG707511572  
**FREEFORM FACETED**  
9.48 X 6.67 X 3.78 MM  
2.40 CARATS  
E  
VVS 2  
0%  
NA  
Medium to Slightly Thick  
Long  
EXCELLENT  
EXCELLENT  
NONE  
IGI LG707511572

Comments: This Laboratory Grown Diamond was created by Chemical Vapor Deposition (CVD) growth process.  
Type IIa