



ELECTRONIC COPY

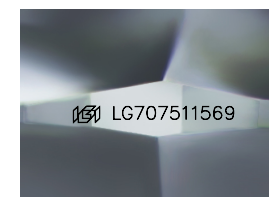
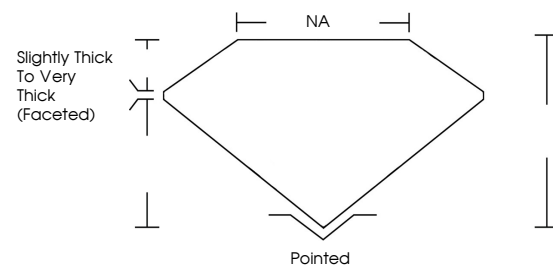
LG707511569
Report verification at igi.org



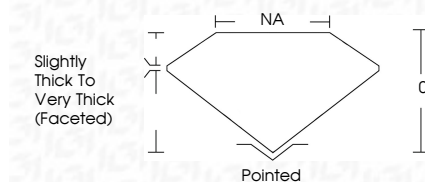
January 15, 2026
IGI Report Number **LG707511569**
Description **LABORATORY GROWN DIAMOND**
Shape and Cutting Style **FREEFORM FACETED**
Measurements **12.04 X 8.42 X 5.10 MM**
GRADING RESULTS
Carat Weight **4.30 CARATS**
Color Grade **F**
Clarity Grade **VVS 1**

January 15, 2026
IGI Report Number **LG707511569**
Description **LABORATORY GROWN DIAMOND**
Shape and Cutting Style **FREEFORM FACETED**
Measurements **12.04 X 8.42 X 5.10 MM**
GRADING RESULTS
Carat Weight **4.30 CARATS**
Color Grade **F**
Clarity Grade **VVS 1**

PROPORTIONS



Sample Image Used



ADDITIONAL GRADING INFORMATION

Polish **EXCELLENT**
Symmetry **EXCELLENT**
Fluorescence **NONE**
Inscription(s) **IGI LG707511569**

Comments: This Laboratory Grown Diamond was created by Chemical Vapor Deposition (CVD) growth process. Type IIa

ADDITIONAL GRADING INFORMATION

Polish **EXCELLENT**
Symmetry **EXCELLENT**
Fluorescence **NONE**
Inscription(s) **IGI LG707511569**
Comments: This Laboratory Grown Diamond was created by Chemical Vapor Deposition (CVD) growth process. Type IIa

COLOR

D E F G H I J Faint Very Light Light

CLARITY

FL	IF	VVS ¹⁻²	VS ¹⁻²	SI ¹⁻²	I ¹⁻³
Flawless	Internally Flawless	Very Very Slightly Included	Very Slightly Included	Slightly Included	Included



IGI



January 15, 2026
IGI Report No LG707511569
FREEFORM FACETED
12.04 X 8.42 X 5.10 MM
4.30 CARATS
F
VVS 1
0%
NA
Slightly Thick To Very Thick (Faceted)
Pointed
EXCELLENT
EXCELLENT
NONE
IGI LG707511569

Comments: This Laboratory Grown Diamond was created by Chemical Vapor Deposition (CVD) growth process. Type IIa