



**ELECTRONIC COPY**

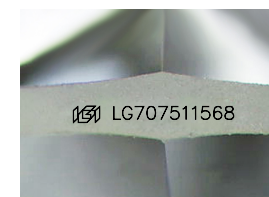
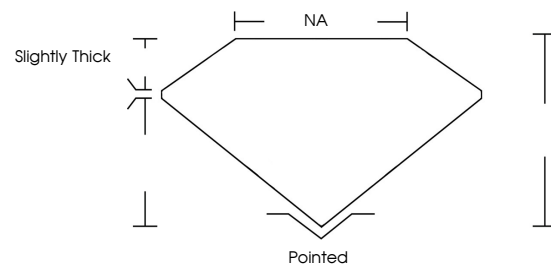
LG707511568  
Report verification at [igi.org](http://igi.org)



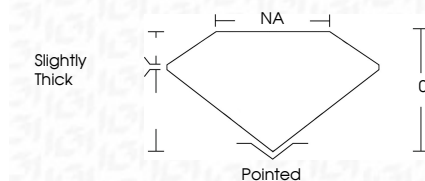
January 17, 2026  
IGI Report Number **LG707511568**  
Description **LABORATORY GROWN DIAMOND**  
Shape and Cutting Style **FREEFORM FACETED**  
Measurements **9.16 X 6.65 X 3.70 MM**  
**GRADING RESULTS**  
Carat Weight **1.92 CARAT**  
Color Grade **F**  
Clarity Grade **VVS 2**

January 17, 2026  
IGI Report Number **LG707511568**  
Description **LABORATORY GROWN DIAMOND**  
Shape and Cutting Style **FREEFORM FACETED**  
Measurements **9.16 X 6.65 X 3.70 MM**  
**GRADING RESULTS**  
Carat Weight **1.92 CARAT**  
Color Grade **F**  
Clarity Grade **VVS 2**

**PROPORTIONS**



Sample Image Used



**ADDITIONAL GRADING INFORMATION**  
Polish **EXCELLENT**  
Symmetry **EXCELLENT**  
Fluorescence **NONE**  
Inscription(s) **IGI LG707511568**

Comments: This Laboratory Grown Diamond was created by Chemical Vapor Deposition (CVD) growth process.  
Type IIa

**COLOR**

D E F G H I J Faint Very Light Light

**CLARITY**

FL	IF	VS <sup>1-2</sup>	VS <sup>1-2</sup>	SI <sup>1-2</sup>	I <sup>1-3</sup>
Flawless	Internally Flawless	Very Very Slightly Included	Very Slightly Included	Slightly Included	Included

**ADDITIONAL GRADING INFORMATION**

Polish **EXCELLENT**  
Symmetry **EXCELLENT**  
Fluorescence **NONE**  
Inscription(s) **IGI LG707511568**  
Comments: This Laboratory Grown Diamond was created by Chemical Vapor Deposition (CVD) growth process.  
Type IIa



January 17, 2026  
IGI Report No LG707511568  
FREEFORM FACETED  
9.16 X 6.65 X 3.70 MM  
1.92 CARAT  
F  
VVS 2  
0%  
NA  
Slightly Thick  
Pointed  
EXCELLENT  
EXCELLENT  
NONE  
IGI LG707511568  
Comments: This Laboratory Grown Diamond was created by Chemical Vapor Deposition (CVD) growth process.  
Type IIa