



ELECTRONIC COPY

LG707511563
Report verification at igi.org



January 17, 2026

IGI Report Number **LG707511563**

Description **LABORATORY GROWN DIAMOND**

Shape and Cutting Style **FREEFORM FACETED**

Measurements **8.30 X 5.90 X 3.68 MM**

GRADING RESULTS

Carat Weight **1.34 CARAT**

Color Grade **E**

Clarity Grade **VVS 2**

January 17, 2026

IGI Report Number **LG707511563**

Description **LABORATORY GROWN DIAMOND**

Shape and Cutting Style **FREEFORM FACETED**

Measurements **8.30 X 5.90 X 3.68 MM**

GRADING RESULTS

Carat Weight **1.34 CARAT**

Color Grade **E**

Clarity Grade **VVS 2**

ADDITIONAL GRADING INFORMATION

Polish **EXCELLENT**

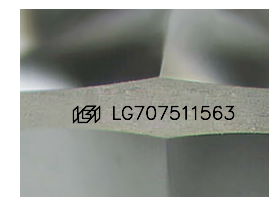
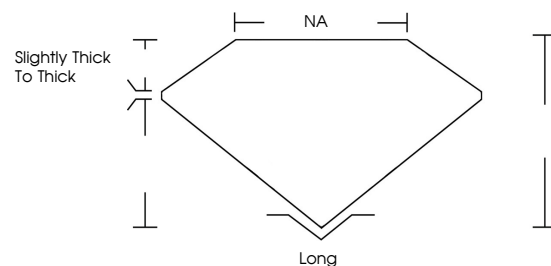
Symmetry **EXCELLENT**

Fluorescence **NONE**

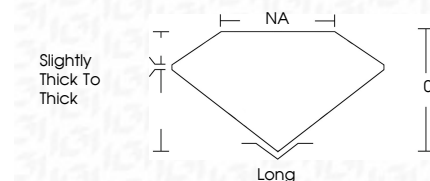
Inscription(s) **IGI LG707511563**

Comments: This Laboratory Grown Diamond was created by Chemical Vapor Deposition (CVD) growth process.
Type IIa

PROPORTIONS



Sample Image Used



COLOR

D E F G H I J Faint Very Light Light

CLARITY

FL	IF	VS ¹⁻²	VS ¹⁻²	SI ¹⁻²	I ¹⁻³
Flawless	Internally Flawless	Very Very Slightly Included	Very Slightly Included	Slightly Included	Included

ADDITIONAL GRADING INFORMATION

Polish **EXCELLENT**

Symmetry **EXCELLENT**

Fluorescence **NONE**

Inscription(s) **IGI LG707511563**

Comments: This Laboratory Grown Diamond was created by Chemical Vapor Deposition (CVD) growth process.
Type IIa



IGI



January 17, 2026
IGI Report No LG707511563
FREEFORM FACETED
8.30 X 5.90 X 3.68 MM
1.34 CARAT
E
VVS 2
0%
NA
Slightly thick to thick
Long
EXCELLENT
EXCELLENT
NONE
IGI LG707511563

Comments: This Laboratory Grown Diamond was created by Chemical Vapor Deposition (CVD) growth process.
Type IIa