



ELECTRONIC COPY

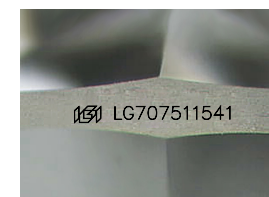
LG707511541
Report verification at igi.org



January 6, 2026
IGI Report Number **LG707511541**
Description **LABORATORY GROWN DIAMOND**
Shape and Cutting Style **FREEFORM FACETED**
Measurements **7.80 X 5.10 X 3.88 MM**

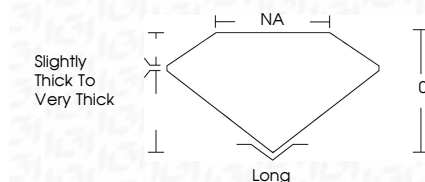
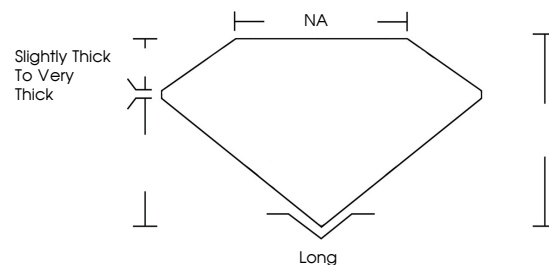
GRADING RESULTS

Carat Weight **1.21 CARAT**
Color Grade **E**
Clarity Grade **VS 1**



Sample Image Used

PROPORTIONS



ADDITIONAL GRADING INFORMATION

Polish **EXCELLENT**
Symmetry **EXCELLENT**
Fluorescence **NONE**
Inscription(s) **IGI LG707511541**
Comments: This Laboratory Grown Diamond was created by Chemical Vapor Deposition (CVD) growth process. Type IIa



COLOR

D E F G H I J Faint Very Light Light

CLARITY

FL	IF	VS ¹⁻²	VS ¹⁻²	SI ¹⁻²	I ¹⁻³
Flawless	Internally Flawless	Very Very Slightly Included	Very Slightly Included	Slightly Included	Included



January 6, 2026
IGI Report No LG707511541
FREEFORM FACETED
7.80 X 5.10 X 3.88 MM
1.21 CARAT
E
VS 1
0%
NA
Slightly Thick To Very Thick
Long
EXCELLENT
EXCELLENT
NONE
IGI LG707511541

Comments: This Laboratory Grown Diamond was created by Chemical Vapor Deposition (CVD) growth process. Type IIa