



ELECTRONIC COPY

LG707511522
Report verification at igi.org



December 26, 2025

IGI Report Number **LG707511522**

Description **LABORATORY GROWN DIAMOND**

Shape and Cutting Style **FREEFORM FACETED**

Measurements **9.38 X 5.53 X 2.77 MM**

GRADING RESULTS

Carat Weight **1.20 CARAT**

Color Grade **E**

Clarity Grade **VVS 2**

December 26, 2025

IGI Report Number **LG707511522**

Description **LABORATORY GROWN DIAMOND**

Shape and Cutting Style **FREEFORM FACETED**

Measurements **9.38 X 5.53 X 2.77 MM**

GRADING RESULTS

Carat Weight **1.20 CARAT**

Color Grade **E**

Clarity Grade **VVS 2**

ADDITIONAL GRADING INFORMATION

Polish **EXCELLENT**

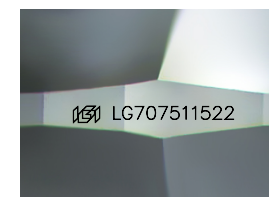
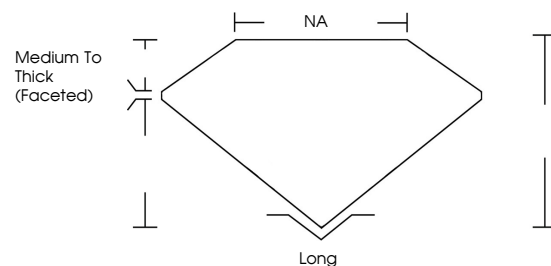
Symmetry **EXCELLENT**

Fluorescence **NONE**

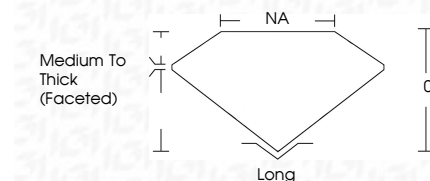
Inscription(s) **LG707511522**

Comments: This Laboratory Grown Diamond was created by Chemical Vapor Deposition (CVD) growth process.
Type IIa

PROPORTIONS



Sample Image Used



COLOR

D E F G H I J Faint Very Light Light

CLARITY

FL	IF	VVS ¹⁻²	VS ¹⁻²	SI ¹⁻²	I ¹⁻³
Flawless	Internally Flawless	Very Very Slightly Included	Very Slightly Included	Slightly Included	Included

ADDITIONAL GRADING INFORMATION

Polish **EXCELLENT**

Symmetry **EXCELLENT**

Fluorescence **NONE**

Inscription(s) **LG707511522**

Comments: This Laboratory Grown Diamond was created by Chemical Vapor Deposition (CVD) growth process.
Type IIa



IGI



December 26, 2025
IGI Report No LG707511522
FREEFORM FACETED
9.38 X 5.53 X 2.77 MM
1.20 CARAT
E
VVS 2
0%
NA
Medium To Thick (Faceted)
Long
EXCELLENT
EXCELLENT
NONE
None LG707511522
Comments: This Laboratory Grown Diamond was created by Chemical Vapor Deposition (CVD) growth process.
Type IIa