



**ELECTRONIC COPY**

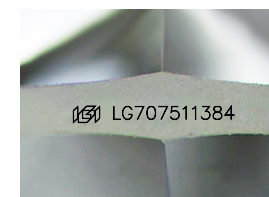
LG707511384  
Report verification at igi.org



October 13, 2025  
IGI Report Number **LG707511384**  
Description **LABORATORY GROWN DIAMOND**  
Shape and Cutting Style **FREEFORM FACETED**  
Measurements **13.07 X 8.87 X 3.97 MM**

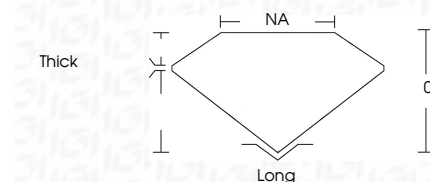
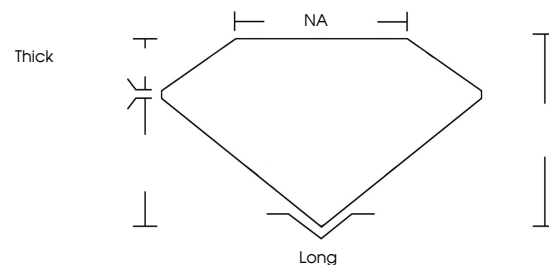
**GRADING RESULTS**

Carat Weight **4.67 CARATS**  
Color Grade **G**  
Clarity Grade **VVS 2**



Sample Image Used

**PROPORTIONS**



**ADDITIONAL GRADING INFORMATION**

Polish **EXCELLENT**  
Symmetry **VERY GOOD**  
Fluorescence **NONE**  
Inscription(s) **IGI LG707511384**  
Comments: This Laboratory Grown Diamond was created by Chemical Vapor Deposition (CVD) growth process. Type IIa



**COLOR**

D E F G H I J Faint Very Light Light

**CLARITY**

FL	IF	VVS <sup>1-2</sup>	VS <sup>1-2</sup>	SI <sup>1-2</sup>	I <sup>1-3</sup>
Flawless	Internally Flawless	Very Very Slightly Included	Very Slightly Included	Slightly Included	Included



October 13, 2025  
IGI Report No LG707511384  
FREEFORM FACETED  
13.07 X 8.87 X 3.97 MM  
4.67 CARATS  
G  
VVS 2  
0%  
NA  
Thick  
Long  
EXCELLENT  
VERY GOOD  
NONE  
IGI LG707511384  
Comments: This Laboratory Grown Diamond was created by Chemical Vapor Deposition (CVD) growth process. Type IIa