



INTERNATIONAL GEMOLOGICAL INSTITUTE

ELECTRONIC COPY

LABORATORY GROWN DIAMOND REPORT

October 8, 2025

IGI Report Number

LG707511378

Description

LABORATORY GROWN DIAMOND

Shape and Cutting Style

FREEFORM FACETED

Measurements

9.06 X 6.36 X 2.82 MM

GRADING RESULTS

Carat Weight

0.98 CARAT

Color Grade

E

Clarity Grade

VVS 2

Cut Grade

VERY GOOD

ADDITIONAL GRADING INFORMATION

Polish

EXCELLENT

Symmetry

VERY GOOD

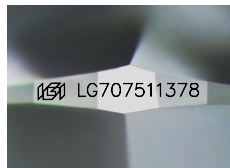
Fluorescence

NONE

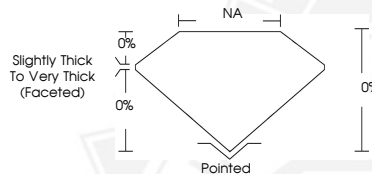
Inscription(s)

IGI LG707511378

Comments: This Laboratory Grown Diamond was created by Chemical Vapor Deposition (CVD) growth process. Type IIa



Sample Image Used



October 8, 2025

IGI Report Number LG707511378

FREEFORM FACETED

LABORATORY GROWN DIAMOND

9.06 X 6.36 X 2.82 MM

Carat Weight 0.98 CARAT

Color Grade E

Clarity Grade VVS 2

Cut Grade VERY GOOD

Polish EXCELLENT

Symmetry VERY GOOD

Fluorescence NONE

Inscription(s) IGI LG707511378

Comments: This Laboratory Grown Diamond was created by Chemical Vapor Deposition (CVD) growth process. Type IIa



October 8, 2025

IGI Report Number LG707511378

FREEFORM FACETED

LABORATORY GROWN DIAMOND

9.06 X 6.36 X 2.82 MM

Carat Weight 0.98 CARAT

Color Grade E

Clarity Grade VVS 2

Cut Grade VERY GOOD

Polish EXCELLENT

Symmetry VERY GOOD

Fluorescence NONE

Inscription(s) IGI LG707511378

Comments: This Laboratory Grown Diamond was created by Chemical Vapor Deposition (CVD) growth process. Type IIa



THIS DOCUMENT WAS PRODUCED WITH THE FOLLOWING SECURITY MEASURES: SPECIAL DOCUMENT PAPER, INK SCREENS, WATERMARK, BACKGROUND DESIGNS, HOLOGRAM AND OTHER SECURITY FEATURES NOT LISTED AND DO EXCEED DOCUMENT SECURITY INDUSTRY GUIDELINES.

For terms & conditions and to verify this report, please visit www.igi.org