



ELECTRONIC COPY

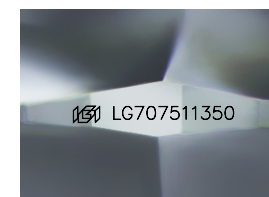
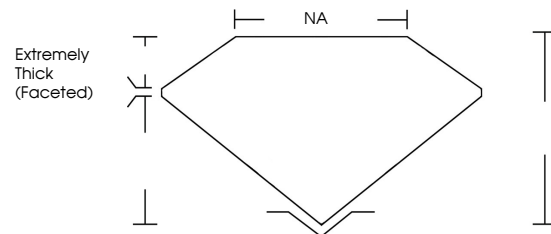
LG707511350
Report verification at igi.org



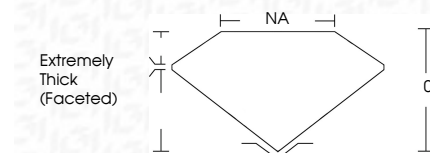
September 5, 2025
IGI Report Number **LG707511350**
Description **LABORATORY GROWN DIAMOND**
Shape and Cutting Style **FREEFORM FACETED**
Measurements **10.00 X 8.50 X 4.35 MM**
GRADING RESULTS
Carat Weight **3.63 CARATS**
Color Grade **I**
Clarity Grade **VVS 2**

September 5, 2025
IGI Report Number **LG707511350**
Description **LABORATORY GROWN DIAMOND**
Shape and Cutting Style **FREEFORM FACETED**
Measurements **10.00 X 8.50 X 4.35 MM**
GRADING RESULTS
Carat Weight **3.63 CARATS**
Color Grade **I**
Clarity Grade **VVS 2**

PROPORTIONS



Sample Image Used



ADDITIONAL GRADING INFORMATION

Polish **EXCELLENT**
Symmetry **EXCELLENT**
Fluorescence **NONE**
Inscription(s) **IGI LG707511350**

Comments: This Laboratory Grown Diamond was created by Chemical Vapor Deposition (CVD) growth process.
Type IIa

COLOR

D E F G H I J Faint Very Light Light

CLARITY

IF	VS ¹⁻²	VS ¹⁻²	SI ¹⁻²	I ¹⁻³
Internally Flawless	Very Very Slightly Included	Very Slightly Included	Slightly Included	Included

ADDITIONAL GRADING INFORMATION

Polish **EXCELLENT**
Symmetry **EXCELLENT**
Fluorescence **NONE**
Inscription(s) **IGI LG707511350**
Comments: This Laboratory Grown Diamond was created by Chemical Vapor Deposition (CVD) growth process.
Type IIa



IGI



September 5, 2025
IGI Report No. LG707511350
FREEFORM FACETED
10.00 X 8.50 X 4.35 MM
3.63 CARATS
I
VVS 2
0%
NA
Extremely Thick (Faceted)
EXCELLENT
EXCELLENT
NONE
IGI LG707511350

Comments: This Laboratory Grown Diamond was created by Chemical Vapor Deposition (CVD) growth process.
Type IIa