



ELECTRONIC COPY

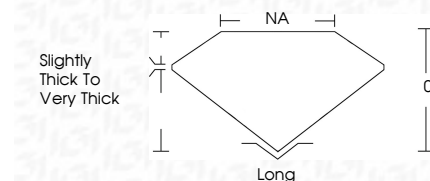
LG707511339
Report verification at igi.org



September 1, 2025
IGI Report Number **LG707511339**
Description **LABORATORY GROWN DIAMOND**
Shape and Cutting Style **FREEFORM FACETED**
Measurements **12.47 X 8.50 X 4.65 MM**

GRADING RESULTS

Carat Weight **4.88 CARATS**
Color Grade **G**
Clarity Grade **VVS 2**



ADDITIONAL GRADING INFORMATION

Polish **EXCELLENT**
Symmetry **EXCELLENT**
Fluorescence **NONE**
Inscription(s) **IGI LG707511339**
Comments: This Laboratory Grown Diamond was created by Chemical Vapor Deposition (CVD) growth process. Type IIa



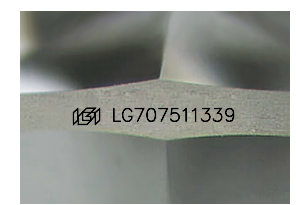
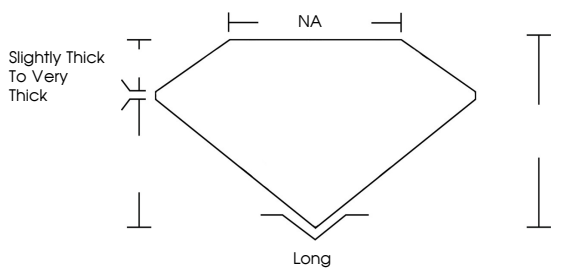
September 1, 2025
IGI Report No. LG707511339
FREEFORM FACETED
12.47 X 8.50 X 4.65 MM
4.88 CARATS
G
VVS 2
0%
NA
Slightly Thick To Very Thick
Long
EXCELLENT
EXCELLENT
NONE
IGI LG707511339
Comments: This Laboratory Grown Diamond was created by Chemical Vapor Deposition (CVD) growth process. Type IIa

September 1, 2025
IGI Report Number **LG707511339**
Description **LABORATORY GROWN DIAMOND**
Shape and Cutting Style **FREEFORM FACETED**
Measurements **12.47 X 8.50 X 4.65 MM**
GRADING RESULTS
Carat Weight **4.88 CARATS**
Color Grade **G**
Clarity Grade **VVS 2**

ADDITIONAL GRADING INFORMATION
Polish **EXCELLENT**
Symmetry **EXCELLENT**
Fluorescence **NONE**
Inscription(s) **IGI LG707511339**

Comments: This Laboratory Grown Diamond was created by Chemical Vapor Deposition (CVD) growth process. Type IIa

PROPORTIONS



Sample Image Used

COLOR

D E F G H I J Faint Very Light Light

CLARITY

IF	VS ¹⁻²	VS ¹⁻²	SI ¹⁻²	I ¹⁻³
Internally Flawless	Very Very Slightly Included	Very Slightly Included	Slightly Included	Included

