



ELECTRONIC COPY

LG707511335
Report verification at igi.org



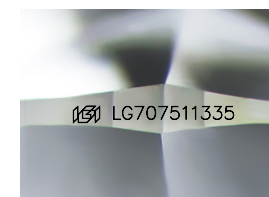
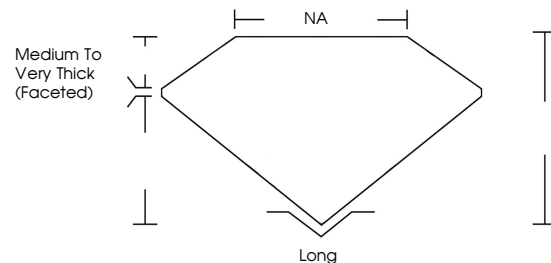
September 2, 2025
IGI Report Number **LG707511335**
Description **LABORATORY GROWN DIAMOND**
Shape and Cutting Style **FREEFORM FACETED**
Measurements **9.90 X 15.70 X 4.10 MM**

GRADING RESULTS

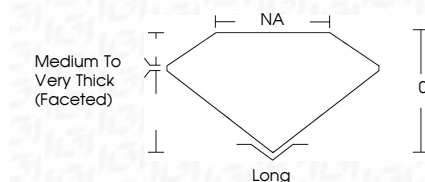
Carat Weight **4.61 CARATS**
Color Grade **H**
Clarity Grade **VVS 2**

September 2, 2025
IGI Report Number **LG707511335**
Description **LABORATORY GROWN DIAMOND**
Shape and Cutting Style **FREEFORM FACETED**
Measurements **9.90 X 15.70 X 4.10 MM**
GRADING RESULTS
Carat Weight **4.61 CARATS**
Color Grade **H**
Clarity Grade **VVS 2**

PROPORTIONS



Sample Image Used



ADDITIONAL GRADING INFORMATION

Polish **EXCELLENT**
Symmetry **EXCELLENT**
Fluorescence **NONE**
Inscription(s) **IGI LG707511335**

Comments: This Laboratory Grown Diamond was created by Chemical Vapor Deposition (CVD) growth process.
Type IIa

ADDITIONAL GRADING INFORMATION

Polish **EXCELLENT**
Symmetry **EXCELLENT**
Fluorescence **NONE**
Inscription(s) **IGI LG707511335**
Comments: This Laboratory Grown Diamond was created by Chemical Vapor Deposition (CVD) growth process.
Type IIa

COLOR

D E F G H I J Faint Very Light Light

CLARITY

IF	VS ¹⁻²	VS ¹⁻²	SI ¹⁻²	I ¹⁻³
Internally Flawless	Very Very Slightly Included	Very Slightly Included	Slightly Included	Included



IGI



September 2, 2025
IGI Report No. LG707511335
FREEFORM FACETED
9.90 X 15.70 X 4.10 MM
4.61 CARATS
H
VVS 2
0%
NA
Medium to Very Thick (Faceted)
Long
EXCELLENT
EXCELLENT
NONE
IGI LG707511335
Comments: This Laboratory Grown Diamond was created by Chemical Vapor Deposition (CVD) growth process.
Type IIa