



ELECTRONIC COPY

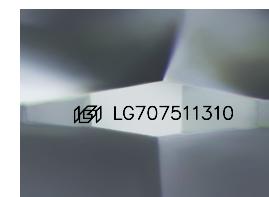
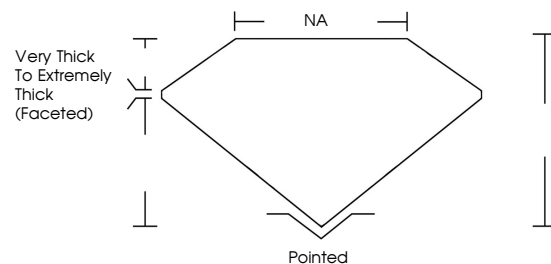
LG707511310
Report verification at igi.org



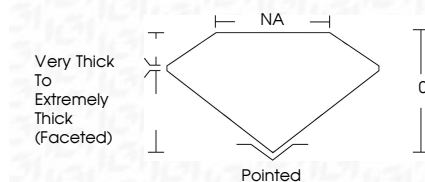
August 4, 2025
IGI Report Number **LG707511310**
Description **LABORATORY GROWN DIAMOND**
Shape and Cutting Style **FREEFORM FACETED**
Measurements **10.27 X 900.00 X 4.93 MM**
GRADING RESULTS
Carat Weight **3.68 CARATS**
Color Grade **E**
Clarity Grade **VVS 2**

August 4, 2025
IGI Report Number **LG707511310**
Description **LABORATORY GROWN DIAMOND**
Shape and Cutting Style **FREEFORM FACETED**
Measurements **10.27 X 900.00 X 4.93 MM**
GRADING RESULTS
Carat Weight **3.68 CARATS**
Color Grade **E**
Clarity Grade **VVS 2**

PROPORTIONS



Sample Image Used



ADDITIONAL GRADING INFORMATION

Polish **EXCELLENT**
Symmetry **EXCELLENT**
Fluorescence **NONE**
Inscription(s) **IGI LG707511310**

Comments: This Laboratory Grown Diamond was created by Chemical Vapor Deposition (CVD) growth process.
Type IIa

ADDITIONAL GRADING INFORMATION

Polish **EXCELLENT**
Symmetry **EXCELLENT**
Fluorescence **NONE**
Inscription(s) **IGI LG707511310**
Comments: This Laboratory Grown Diamond was created by Chemical Vapor Deposition (CVD) growth process.
Type IIa

COLOR

D E F G H I J Faint Very Light Light

CLARITY

IF	VS ¹⁻²	VS ¹⁻²	SI ¹⁻²	I ¹⁻³
Internally Flawless	Very Very Slightly Included	Very Slightly Included	Slightly Included	Included



August 4, 2025
IGI Report No LG707511310
FREEFORM FACETED
10.27 X 900.00 X 4.93 MM
3.68 CARATS
E
VVS 2
0%
NA
Very Thick To Extremely Thick (Faceted)
Pointed
EXCELLENT
EXCELLENT
NONE
IGI LG707511310

Comments: This Laboratory Grown Diamond was created by Chemical Vapor Deposition (CVD) growth process.
Type IIa