



ELECTRONIC COPY

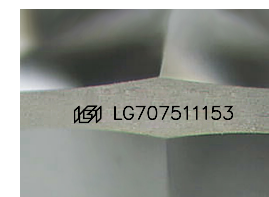
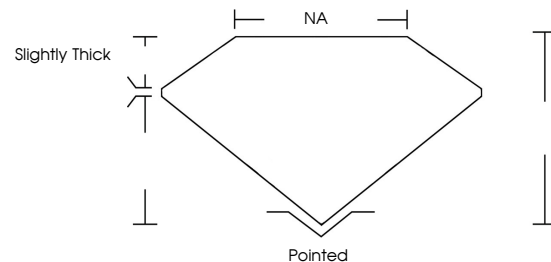
LG707511153
Report verification at igi.org



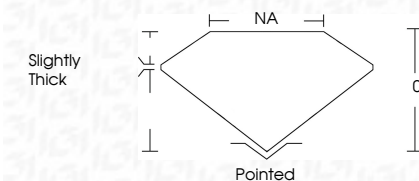
July 1, 2025
IGI Report Number **LG707511153**
Description **LABORATORY GROWN DIAMOND**
Shape and Cutting Style **FREEFORM FACETED**
Measurements **7.98 X 6.12 X 3.67 MM**
GRADING RESULTS
Carat Weight **1.26 CARAT**
Color Grade **FANCY VIVID PINK**
Clarity Grade **VVS 2**
Cut Grade **VERY GOOD**

July 1, 2025
IGI Report Number **LG707511153**
Description **LABORATORY GROWN DIAMOND**
Shape and Cutting Style **FREEFORM FACETED**
Measurements **7.98 X 6.12 X 3.67 MM**
GRADING RESULTS
Carat Weight **1.26 CARAT**
Color Grade **FANCY VIVID PINK**
Clarity Grade **VVS 2**
Cut Grade **VERY GOOD**

PROPORTIONS



Sample Image Used



ADDITIONAL GRADING INFORMATION

Polish **EXCELLENT**
Symmetry **EXCELLENT**
Fluorescence **STRONG**
Inscription(s) **IGI LG707511153**

Comments: This Laboratory Grown Diamond was created by Chemical Vapor Deposition (CVD) growth process.
Indications of post-growth treatment.

ADDITIONAL GRADING INFORMATION

Polish **EXCELLENT**
Symmetry **EXCELLENT**
Fluorescence **STRONG**
Inscription(s) **IGI LG707511153**
Comments: This Laboratory Grown Diamond was created by Chemical Vapor Deposition (CVD) growth process.
Indications of post-growth treatment.

COLOR

D E F G H I J Faint Very Light Light

CLARITY

IF	VS ¹⁻²	VS ¹⁻²	SI ¹⁻²	I ¹⁻³
Internally Flawless	Very Very Slightly Included	Very Slightly Included	Slightly Included	Included



IGI



July 1, 2025
IGI Report No LG707511153
FREEFORM FACETED
7.98 X 6.12 X 3.67 MM
1.26 CARAT
FANCY VIVID PINK
VVS 2
VERY GOOD
0%
NA
Slightly Thick
Pointed
EXCELLENT
EXCELLENT
STRONG
IGI LG707511153
Comments: This Laboratory Grown Diamond was created by Chemical Vapor Deposition (CVD) growth process.
Indications of post-growth treatment.