



ELECTRONIC COPY

LABORATORY GROWN DIAMOND REPORT

LG707511030
Report verification at igi.org

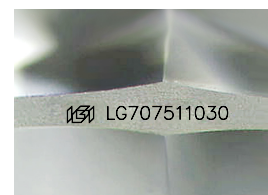
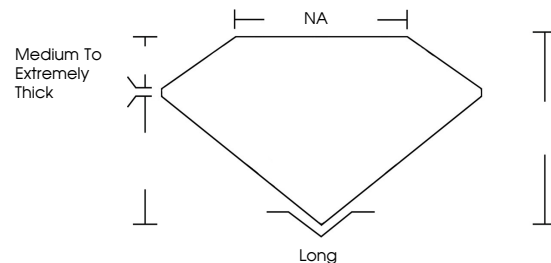
May 21, 2025	
IGI Report Number	LG707511030
Description	LABORATORY GROWN DIAMOND
Shape and Cutting Style	FREEFORM FACETED
Measurements	18.30 X 6.82 X 4.38 MM
GRADING RESULTS	
Carat Weight	5.67 CARATS
Color Grade	H
Clarity Grade	VVS 2
Cut Grade	GOOD

ADDITIONAL GRADING INFORMATION

Polish	EXCELLENT
Symmetry	EXCELLENT
Fluorescence	NONE
Inscription(s)	151 LG707511030

Comments: This Laboratory Grown Diamond was created by Chemical Vapor Deposition (CVD) growth process.
Type IIa

PROPORTIONS



Sample Image Used

COLOR

D E F G H I J Faint Very Light Light

CLARITY

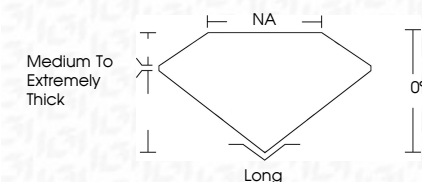
IF VS¹⁻² VS¹⁻² S¹⁻² |¹⁻³

Internally Flawless	Very Very Slightly Included	Very Slightly Included	Slightly Included	Included
------------------------	--------------------------------	---------------------------	----------------------	----------

LABORATORY GROWN DIAMOND REPORT



May 21, 2025	
IGI Report Number	LG707511030
Description	LABORATORY GROWN DIAMOND
Shape and Cutting Style	FREEFORM FACETED
Measurements	18.30 X 6.82 X 4.38 MM
GRADING RESULTS	
Carat Weight	5.67 CARATS
Color Grade	H
Clarity Grade	VVS 2
Cut Grade	GOOD



ADDITIONAL GRADING INFORMATION

Polish	EXCELLENT
Symmetry	EXCELLENT
Fluorescence	NONE
Inscription(s)	 LG707511030
Comments: This Laboratory Grown Diamond was created by Chemical Vapor Deposition (CVD) growth process.	
Type IIa	



© IGI 2020, International Gemological Institute

FD - 10 20



THIS DOCUMENT WAS PRODUCED WITH THE FOLLOWING SECURITY MEASURES: SPECIAL DOCUMENT PAPER, INK SCREENS, WATERMARK, BACKGROUND DESIGNS, HOLOGRAM, AND OTHER SECURITY FEATURES NOT LISTED AND DO EXCEED DOCUMENT SECURITY INDUSTRY GUIDELINES

www.igi.org

