



ELECTRONIC COPY

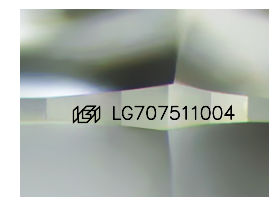
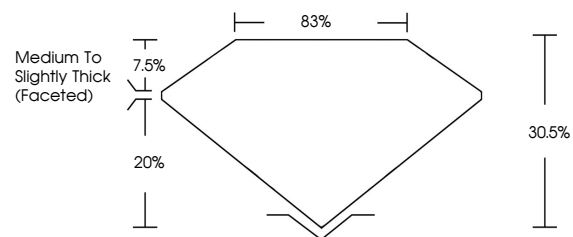
LG707511004
Report verification at igi.org



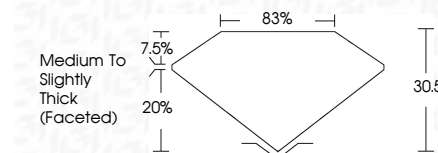
May 21, 2025
IGI Report Number **LG707511004**
Description **LABORATORY GROWN DIAMOND**
Shape and Cutting Style **ROUND ROSE CUT**
Measurements **15.24 - 15.39 X 4.68 MM**
GRADING RESULTS
Carat Weight **9.91 CARATS**
Color Grade **G**
Clarity Grade **VS 1**
Cut Grade **VERY GOOD**

May 21, 2025
IGI Report Number **LG707511004**
Description **LABORATORY GROWN DIAMOND**
Shape and Cutting Style **ROUND ROSE CUT**
Measurements **15.24 - 15.39 X 4.68 MM**
GRADING RESULTS
Carat Weight **9.91 CARATS**
Color Grade **G**
Clarity Grade **VS 1**
Cut Grade **VERY GOOD**

PROPORTIONS



Sample Image Used



ADDITIONAL GRADING INFORMATION

Polish **EXCELLENT**
Symmetry **EXCELLENT**
Fluorescence **NONE**
Inscription(s) **IGI LG707511004**

Comments: This Laboratory Grown Diamond was created by Chemical Vapor Deposition (CVD) growth process. Type IIa

ADDITIONAL GRADING INFORMATION

Polish **EXCELLENT**
Symmetry **EXCELLENT**
Fluorescence **NONE**
Inscription(s) **IGI LG707511004**
Comments: This Laboratory Grown Diamond was created by Chemical Vapor Deposition (CVD) growth process. Type IIa

COLOR

D E F G H I J Faint Very Light Light

CLARITY

IF	WS ¹⁻²	VS ¹⁻²	SI ¹⁻²	I ¹⁻³
Internally Flawless	Very Very Slightly Included	Very Slightly Included	Slightly Included	Included



IGI



May 21, 2025
IGI Report No LG707511004
ROUND ROSE CUT
15.24 - 15.39 X 4.68 MM
9.91 CARATS
Color Grade **G**
Clarity Grade **VS 1**
Depth **30.5%**
Table **83%**
Girdle **Medium To Slightly Thick (Faceted)**
Culet **EXCELLENT**
Polish **EXCELLENT**
Symmetry **EXCELLENT**
Fluorescence **NONE**
Inscriptions(s) **IGI LG707511004**
Comments: This Laboratory Grown Diamond was created by Chemical Vapor Deposition (CVD) growth process. Type IIa