



ELECTRONIC COPY

LG707510883
Report verification at igi.org



May 19, 2025
IGI Report Number **LG707510883**
Description **LABORATORY GROWN DIAMOND**
Shape and Cutting Style **ROUND ROSE CUT**
Measurements **7.02 - 7.04 X 2.24 MM**
GRADING RESULTS
Carat Weight **1.13 CARAT**
Color Grade **FANCY VIVID ORANGE**
Clarity Grade **VS 1**

May 19, 2025
IGI Report Number **LG707510883**
Description **LABORATORY GROWN DIAMOND**
Shape and Cutting Style **ROUND ROSE CUT**
Measurements **7.02 - 7.04 X 2.24 MM**

GRADING RESULTS

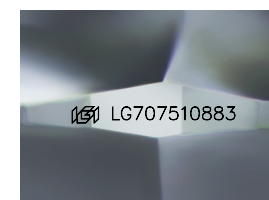
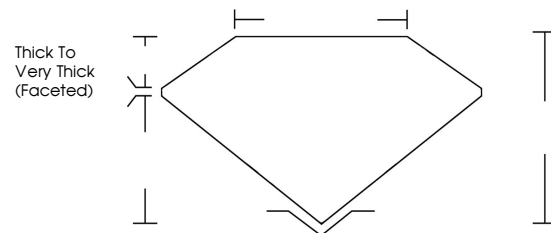
Carat Weight **1.13 CARAT**
Color Grade **FANCY VIVID ORANGE**
Clarity Grade **VS 1**

ADDITIONAL GRADING INFORMATION

Polish **VERY GOOD**
Symmetry **VERY GOOD**
Fluorescence **NONE**
Inscription(s) **LG707510883**

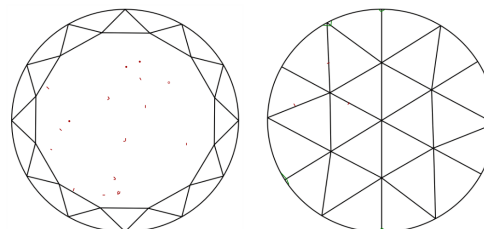
Comments: This Laboratory Grown Diamond was created by Chemical Vapor Deposition (CVD) growth process. Indications of post-growth treatment.

PROPORTIONS



Sample Image Used

CLARITY CHARACTERISTICS



KEY TO SYMBOLS

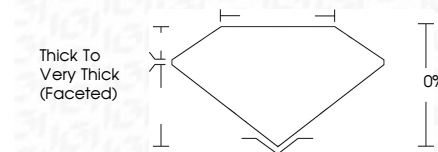
Red symbols indicate internal characteristics.
Green symbols indicate external characteristics.

COLOR

D E F G H I J Faint Very Light Light

CLARITY

IF	WS ¹⁻²	VS ¹⁻²	SI ¹⁻²	I ¹⁻³
Internally Flawless	Very Very Slightly Included	Very Slightly Included	Slightly Included	Included



ADDITIONAL GRADING INFORMATION

Polish **VERY GOOD**
Symmetry **VERY GOOD**
Fluorescence **NONE**
Inscription(s) **LG707510883**
Comments: This Laboratory Grown Diamond was created by Chemical Vapor Deposition (CVD) growth process. Indications of post-growth treatment.



IGI

May 19, 2025
IGI Report No LG707510883
ROUND ROSE CUT
1.13 CARAT
Carat Weight
Color Grade **FANCY VIVID ORANGE**
Clarity Grade **VS 1**
Depth **0%**
Table **0%**
Girdle **Thick to Very Thick (Faceted)**
Culet **VERY GOOD**
Polish **VERY GOOD**
Symmetry **VERY GOOD**
Fluorescence **NONE**
Inscription(s) **LG707510883**
Comments: This Laboratory Grown Diamond was created by Chemical Vapor Deposition (CVD) growth process. Indications of post-growth treatment.