



ELECTRONIC COPY

LG707510872
Report verification at igi.org



May 17, 2025
IGI Report Number **LG707510872**
Description **LABORATORY GROWN DIAMOND**
Shape and Cutting Style **ROUND ROSE CUT**
Measurements **8.75 - 8.80 X 1.76 MM**
GRADING RESULTS
Carat Weight **1.42 CARAT**
Color Grade **FANCY INTENSE GREEN**
Clarity Grade **VS 1**

May 17, 2025
IGI Report Number **LG707510872**
Description **LABORATORY GROWN DIAMOND**
Shape and Cutting Style **ROUND ROSE CUT**
Measurements **8.75 - 8.80 X 1.76 MM**

GRADING RESULTS

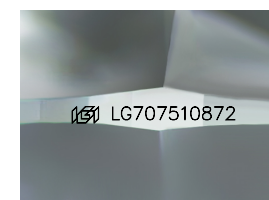
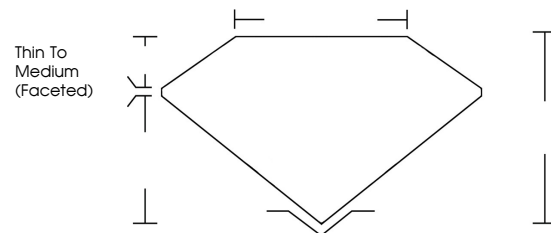
Carat Weight **1.42 CARAT**
Color Grade **FANCY INTENSE GREEN**
Clarity Grade **VS 1**

ADDITIONAL GRADING INFORMATION

Polish **EXCELLENT**
Symmetry **EXCELLENT**
Fluorescence **NONE**
Inscription(s) **IGI LG707510872**

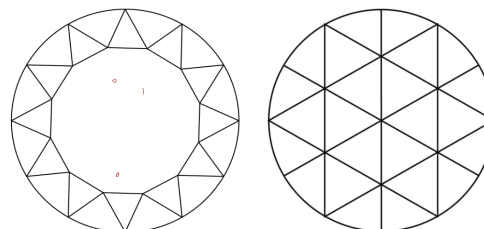
Comments: This Laboratory Grown Diamond was created by Chemical Vapor Deposition (CVD) growth process. Indications of post-growth treatment.

PROPORTIONS



Sample Image Used

CLARITY CHARACTERISTICS



KEY TO SYMBOLS

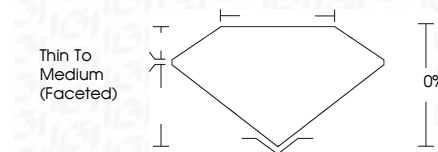
Red symbols indicate internal characteristics.
Green symbols indicate external characteristics.

COLOR

D E F G H I J Faint Very Light Light

CLARITY

IF	VS ¹⁻²	VS ¹⁻²	SI ¹⁻²	I ¹⁻³
Internally Flawless	Very Very Slightly Included	Very Slightly Included	Slightly Included	Included



ADDITIONAL GRADING INFORMATION

Polish **EXCELLENT**
Symmetry **EXCELLENT**
Fluorescence **NONE**
Inscription(s) **IGI LG707510872**
Comments: This Laboratory Grown Diamond was created by Chemical Vapor Deposition (CVD) growth process. Indications of post-growth treatment.



May 17, 2025
IGI Report No LG707510872
ROUND ROSE CUT
8.75 - 8.80 X 1.76 MM
1.42 CARAT
FANCY INTENSE GREEN
VS 1
Thin To Medium (Faceted)
EXCELLENT
EXCELLENT
NONE
IGI LG707510872
Comments: This Laboratory Grown Diamond was created by Chemical Vapor Deposition (CVD) growth process. Indications of post-growth treatment.