



**ELECTRONIC COPY**

## LABORATORY GROWN DIAMOND REPORT

|                         |                          |
|-------------------------|--------------------------|
| May 16, 2025            |                          |
| IGI Report Number       | LG707505883              |
| Description             | LABORATORY GROWN DIAMOND |
| Shape and Cutting Style | ROUND BRILLIANT          |
| Measurements            | 6.76 - 6.79 X 4.21 MM    |

## GRADING RESULTS

|               |            |
|---------------|------------|
| Carat Weight  | 1.20 CARAT |
| Color Grade   | D          |
| Clarity Grade | VS 1       |
| Cut Grade     | IDEAL      |

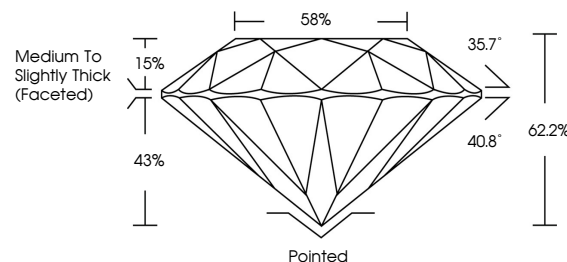
### ADDITIONAL GRADING INFORMATION

|                |                |
|----------------|----------------|
| Polish         | EXCELLENT      |
| Symmetry       | EXCELLENT      |
| Fluorescence   | NONE           |
| Inscription(s) | 15 LG707505883 |

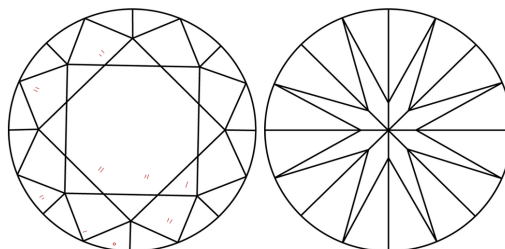
Comments: As Grown - No indication of post-growth treatment.  
This Laboratory Grown Diamond was created by High Pressure High Temperature (HPHT) growth process.  
Type II

LG707505883  
Report verification at [lgi.org](https://lgi.org)

## PROPORTIONS

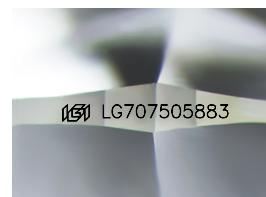


## CLARITY CHARACTERISTICS



## KEY TO SYMBOLS

Red symbols indicate internal characteristics.  
Green symbols indicate external characteristics.



Sample Image Used

## COLOR

D E F G H I J Faint Very Light Light

## CLARITY

IF      VWS<sup>1-2</sup>      VS<sup>1-2</sup>      SI<sup>1-2</sup>      I<sup>1-3</sup>

| Internally<br>Flawless | Very Very<br>Slightly Included | Very<br>Slightly Included | Slightly<br>Included | Included |
|------------------------|--------------------------------|---------------------------|----------------------|----------|
|------------------------|--------------------------------|---------------------------|----------------------|----------|

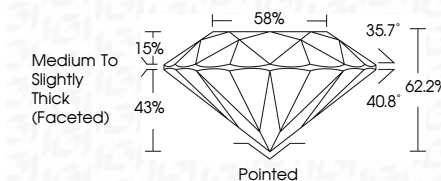
## LABORATORY GROWN DIAMOND REPORT



|                         |                          |
|-------------------------|--------------------------|
| May 16, 2025            |                          |
| IGI Report Number       | LG707505883              |
| Description             | LABORATORY GROWN DIAMOND |
| Shape and Cutting Style | ROUND BRILLIANT          |
| Measurements            | 6.76 - 6.79 X 4.21 MM    |

## GRADING RESULTS

|               |            |
|---------------|------------|
| Carat Weight  | 1.20 CARAT |
| Color Grade   | D          |
| Clarity Grade | VS 1       |
| Cut Grade     | IDEAL      |



### ADDITIONAL GRADING INFORMATION

|  |   |
|--|---|
| Polish   | EXCELLENT   |
| Symmetry   | EXCELLENT   |
| Fluorescence   | NONE  |
| Inscription(s)   |  LG707505883 |
| Comments: As Grown - No indication of post-growth treatment.                                       |   |
| This Laboratory Grown Diamond was created by High Pressure High Temperature (HPHT) growth process. |   |
| Type II  |   |



© IGI 2020, International Gemological Institute

FD - 10 20



THIS DOCUMENT WAS PRODUCED WITH THE FOLLOWING SECURITY MEASURES: SPECIAL DOCUMENT PAPER, INK SCREENS, WATERMARK, BACKGROUND DESIGNS, HOLOGRAM AND OTHER SECURITY FEATURES NOT LISTED AND DO EXCEED DOCUMENT SECURITY INDUSTRY GUIDELINE

**www.igi.org**

May 16, 2025

|                        |                                   |
|------------------------|-----------------------------------|
| Report No. 15070505883 | 1,20 CARAT                        |
| ROUND BRILLIANT        | D                                 |
| 4.75 - 4.75 X 4.21 MM  | VS 1                              |
| Color Weight           | IDEAL                             |
| Color Grade            | 62.2%                             |
| Clarity Grade          | 59%                               |
| Clarity Grade          | Medium to Slightly Thick (Feet00) |
| Depth                  | Paired                            |
| Table                  | EXCELLENT                         |
| Girdle                 | EXCELLENT                         |
| Culet                  | NONE                              |
| Polish                 |                                   |
| Symmetry               |                                   |
| Fluorescence           |                                   |

**Comments:**  
As Grown - No indication of post-growth treatment.  
This Laboratory Grown Diamond was created by High Pressure High temperature (HPHT) growth process.