



**ELECTRONIC COPY**

LG706578120  
Report verification at igi.org



May 12, 2025

IGI Report Number **LG706578120**

Description **LABORATORY GROWN DIAMOND**

Shape and Cutting Style **ROUND BRILLIANT**

Measurements **7.91 - 7.94 X 4.77 MM**

**GRADING RESULTS**

Carat Weight **1.83 CARAT**

Color Grade **E**

Clarity Grade **VVS 2**

Cut Grade **IDEAL**

May 12, 2025

IGI Report Number **LG706578120**

Description **LABORATORY GROWN DIAMOND**

Shape and Cutting Style **ROUND BRILLIANT**

Measurements **7.91 - 7.94 X 4.77 MM**

**GRADING RESULTS**

Carat Weight **1.83 CARAT**

Color Grade **E**

Clarity Grade **VVS 2**

Cut Grade **IDEAL**

**ADDITIONAL GRADING INFORMATION**

Polish **EXCELLENT**

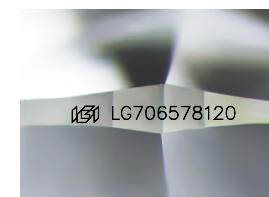
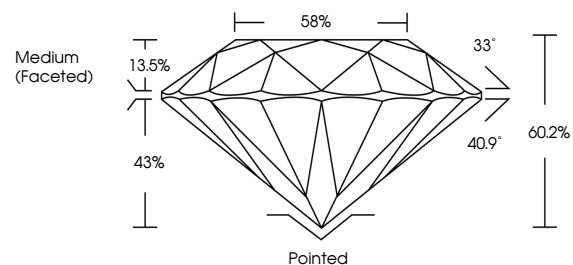
Symmetry **EXCELLENT**

Fluorescence **NONE**

Inscription(s) **LG706578120**

Comments: This Laboratory Grown Diamond was created by Chemical Vapor Deposition (CVD) growth process. Type IIa

**PROPORTIONS**



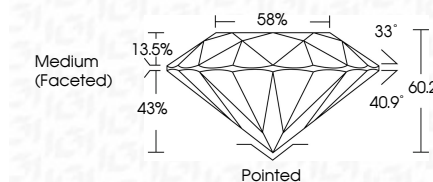
Sample Image Used

**COLOR**

D E F G H I J Faint Very Light Light

**CLARITY**

IF	VS <sup>1-2</sup>	VS <sup>1-2</sup>	SI <sup>1-2</sup>	I <sup>1-3</sup>
Internally Flawless	Very Very Slightly Included	Very Slightly Included	Slightly Included	Included



**ADDITIONAL GRADING INFORMATION**

Polish **EXCELLENT**

Symmetry **EXCELLENT**

Fluorescence **NONE**

Inscription(s) **LG706578120**

Comments: This Laboratory Grown Diamond was created by Chemical Vapor Deposition (CVD) growth process. Type IIa



May 12, 2025	IGI Report No LG706578120	1.83 CARAT	E	Pointed	EXCELLENT	EXCELLENT	NONE	LG706578120
ROUND BRILLIANT	7.91 - 7.94 X 4.77 MM	Color Grade	VVS 2	Depth	60.2%	Girdle	Medium (Faceted)	88%
Carat Weight	Color Grade	Clarity Grade	IDEAL	Cut Grade	60.2%	Table	43%	13.5%
Polish	Symmetry	Fluorescence	EXCELLENT	Inscriptions(s)	LG706578120	Culet	None	33°
<p>Comments: This Laboratory Grown Diamond was created by Chemical Vapor Deposition (CVD) growth process. Type IIa</p>								