



**INTERNATIONAL
GEMOLOGICAL
INSTITUTE**

ELECTRONIC COPY

LG706577641
Report verification at igi.org

LABORATORY GROWN DIAMOND REPORT



May 14, 2025

IGI Report Number **LG706577641**Description **LABORATORY GROWN DIAMOND**

Shape and Cutting Style **CUSHION MODIFIED
BRILLIANT**

Measurements **8.12 X 6.21 X 4.13 MM**

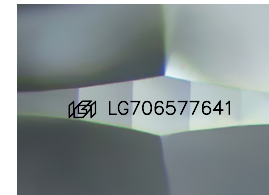
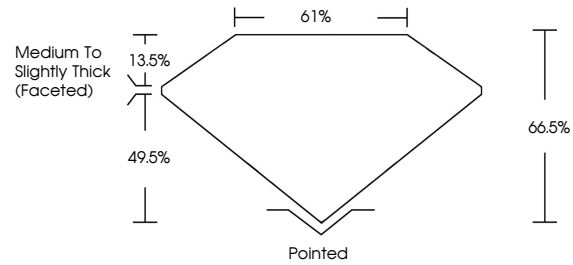
GRADING RESULTS

Carat Weight **1.60 CARAT**

Color Grade **D**

Clarity Grade **VVS 2**

PROPORTIONS



Sample Image Used

COLOR

D E F G H I J Faint Very Light Light

CLARITY

IF WS¹⁻² VS¹⁻² SI¹⁻² I¹⁻³

Internally Flawless	Very Very Slightly Included	Very Slightly Included	Slightly Included	Included
------------------------	--------------------------------	---------------------------	----------------------	----------



© IGI 2020, International Gemological Institute

FD - 10 20



IGI

May 14, 2025	IGI Report No. LG7057/641	1.60 CARAT	14.12 X 6.21 X 4.13 MM
	Cushion Modified Brilliant	Color Grade	Carat Weight
		D	
		VS2	
		64.5%	
		61%	
		Medium to Slightly Thick (faced)	
		Pointed	
		VERY GOOD	
		VERY GOOD	
		NONE	
		1691 LG7057/641	

Comments:

This Laboratory Grown Diamond was created by Chemical Vapor Deposition (CVD) growth process.

Type IId

This Laboratory Grown Diamond was created by Chemical Vapor Deposition (CVD) growth process.
Type IIa

www.igi.org