



ELECTRONIC COPY

LABORATORY GROWN DIAMOND REPORT

May 15, 2025  
IGI Report Number LG706561023  
Description LABORATORY GROWN DIAMOND  
Shape and Cutting Style OCTAGONAL MODIFIED BRILLIANT  
Measurements 7.18 X 7.22 X 4.55 MM

GRADING RESULTS

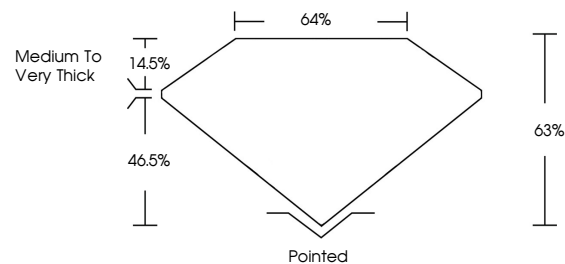
Carat Weight 1.59 CARAT  
Color Grade E  
Clarity Grade VVS 2

ADDITIONAL GRADING INFORMATION

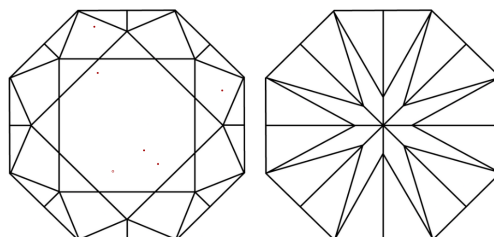
Polish EXCELLENT  
Symmetry EXCELLENT  
Fluorescence NONE  
Inscription(s) LG706561023

Comments: HEARTS & ARROWS  
This Laboratory Grown Diamond was created by Chemical Vapor Deposition (CVD) growth process. Type IIa

PROPORTIONS

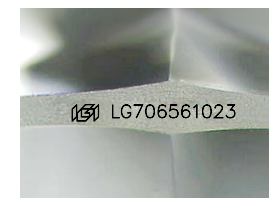
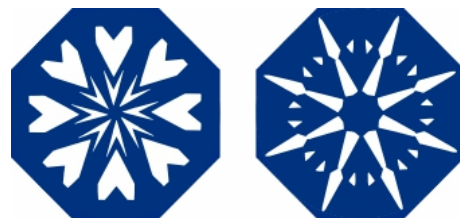


CLARITY CHARACTERISTICS



KEY TO SYMBOLS

Red symbols indicate internal characteristics.  
Green symbols indicate external characteristics.



Sample Image Used

COLOR

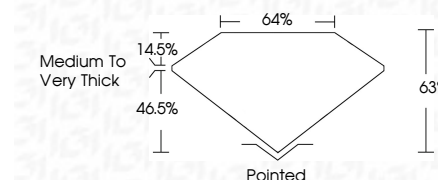
D E F G H I J Faint Very Light Light

CLARITY

IF WS<sup>1-2</sup> VS<sup>1-2</sup> SI<sup>1-2</sup> I<sup>1-3</sup>  
Internally Flawless Very Very Slightly Included Very Slightly Included Slightly Included Included



May 15, 2025  
IGI Report Number LG706561023  
Description LABORATORY GROWN DIAMOND  
Shape and Cutting Style OCTAGONAL MODIFIED BRILLIANT  
Measurements 7.18 X 7.22 X 4.55 MM  
GRADING RESULTS  
Carat Weight 1.59 CARAT  
Color Grade E  
Clarity Grade VVS 2



ADDITIONAL GRADING INFORMATION

Polish EXCELLENT  
Symmetry EXCELLENT  
Fluorescence NONE  
Inscription(s) LG706561023  
Comments: HEARTS & ARROWS  
This Laboratory Grown Diamond was created by Chemical Vapor Deposition (CVD) growth process. Type IIa



IGI



May 15, 2025  
IGI Report No LG706561023  
OCTAGONAL MODIFIED BRILLIANT  
1.59 CARAT E  
7.18 X 7.22 X 4.55 MM  
Carat Weight  
Color Grade VVS 2  
Clarity Grade  
Depth 63%  
Table 64%  
Girdle  
Medium to Very Thick  
Culet Pointed  
Polish EXCELLENT  
Symmetry EXCELLENT  
Fluorescence NONE  
Inscription(s) LG706561023  
Comments: HEARTS & ARROWS  
This Laboratory Grown Diamond was created by Chemical Vapor Deposition (CVD) growth process. Type IIa