



**ELECTRONIC COPY**

LG706558158  
Report verification at igi.org



May 16, 2025

IGI Report Number **LG706558158**

Description **LABORATORY GROWN DIAMOND**

Shape and Cutting Style **ROUND BRILLIANT**

Measurements **9.66 - 9.71 X 5.96 MM**

**GRADING RESULTS**

Carat Weight **3.47 CARATS**

Color Grade **F**

Clarity Grade **VVS 2**

Cut Grade **IDEAL**

May 16, 2025  
IGI Report Number **LG706558158**  
Description **LABORATORY GROWN DIAMOND**  
Shape and Cutting Style **ROUND BRILLIANT**  
Measurements **9.66 - 9.71 X 5.96 MM**

**GRADING RESULTS**

Carat Weight **3.47 CARATS**

Color Grade **F**

Clarity Grade **VVS 2**

Cut Grade **IDEAL**

**ADDITIONAL GRADING INFORMATION**

Polish **EXCELLENT**

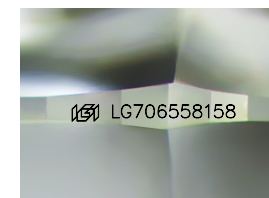
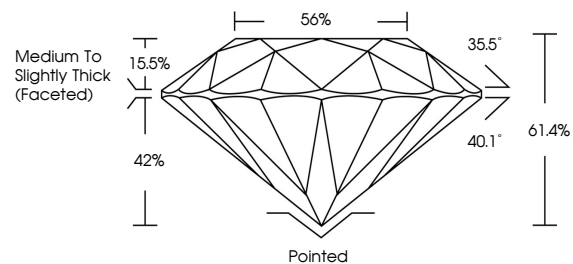
Symmetry **EXCELLENT**

Fluorescence **NONE**

Inscription(s) **LG706558158**

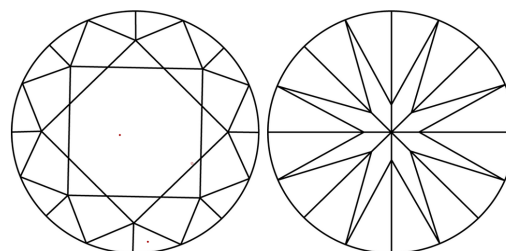
Comments: This Laboratory Grown Diamond was created by Chemical Vapor Deposition (CVD) growth process. Type IIa

**PROPORTIONS**



Sample Image Used

**CLARITY CHARACTERISTICS**



**KEY TO SYMBOLS**

Red symbols indicate internal characteristics.  
Green symbols indicate external characteristics.

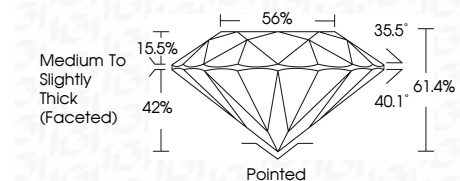
**COLOR**

D E F G H I J Faint Very Light Light

**CLARITY**

IF WS<sup>1-2</sup> VS<sup>1-2</sup> SI<sup>1-2</sup> I<sup>1-3</sup>

Internally Flawless Very Very Slightly Included Very Slightly Included Slightly Included Included



**ADDITIONAL GRADING INFORMATION**

Polish **EXCELLENT**

Symmetry **EXCELLENT**

Fluorescence **NONE**

Inscription(s) **LG706558158**

Comments: This Laboratory Grown Diamond was created by Chemical Vapor Deposition (CVD) growth process. Type IIa



**IGI**



|                 |                           |             |               |           |       |       |        |                                    |         |           |           |              |                |
|-----------------|---------------------------|-------------|---------------|-----------|-------|-------|--------|------------------------------------|---------|-----------|-----------|--------------|----------------|
| May 16, 2025    | IGI Report No LG706558158 | 3.47 CARATS | F             | VVS 2     | IDEAL | 61.4% | 56%    | Medium To Slightly Thick (Faceted) | Pointed | EXCELLENT | EXCELLENT | NONE         | LG706558158    |
| ROUND BRILLIANT | 9.66 - 9.71 X 5.96 MM     | Color Grade | Clarity Grade | Cut Grade | Depth | Table | Girdle |                                    |         | Polish    | Symmetry  | Fluorescence | Inscription(s) |
|                 |                           |             |               |           |       |       |        |                                    |         |           |           |              |                |

Comments: This Laboratory Grown Diamond was created by Chemical Vapor Deposition (CVD) growth process. Type IIa