



ELECTRONIC COPY

LG706558046 Report verification at igi.org



May 14, 2025 IGI Report Number LG706558046 Description LABORATORY GROWN DIAMOND Shape and Cutting Style ROUND BRILLIANT Measurements 8.00 - 8.02 X 4.94 MM GRADING RESULTS Carat Weight 1.94 CARAT Color Grade E Clarity Grade VS 2 Cut Grade IDEAL

LABORATORY GROWN DIAMOND REPORT

May 14, 2025 IGI Report Number LG706558046 Description LABORATORY GROWN DIAMOND Shape and Cutting Style ROUND BRILLIANT Measurements 8.00 - 8.02 X 4.94 MM

GRADING RESULTS

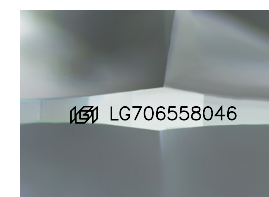
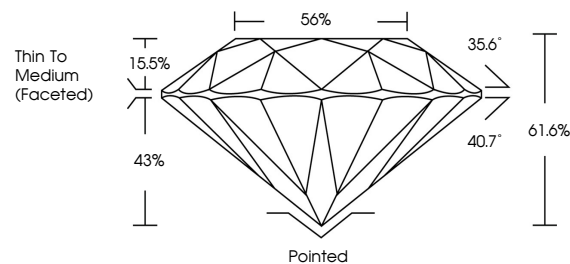
Carat Weight 1.94 CARAT Color Grade E Clarity Grade VS 2 Cut Grade IDEAL

ADDITIONAL GRADING INFORMATION

Polish EXCELLENT Symmetry EXCELLENT Fluorescence NONE Inscription(s) IGI LG706558046

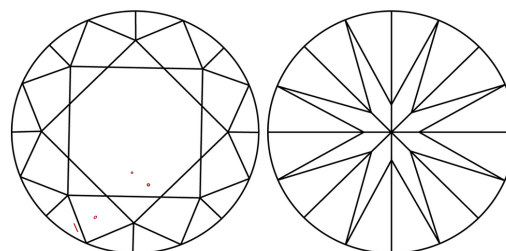
Comments: This Laboratory Grown Diamond was created by Chemical Vapor Deposition (CVD) growth process. Type IIa

PROPORTIONS



Sample Image Used

CLARITY CHARACTERISTICS



KEY TO SYMBOLS

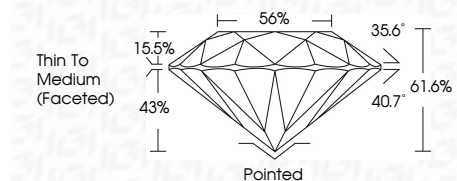
Red symbols indicate internal characteristics. Green symbols indicate external characteristics.

COLOR

D E F G H I J Faint Very Light Light

CLARITY

IF WS 1-2 VS 1-2 SI 1-2 I 1-3 Internally Flawless Very Very Slightly Included Very Slightly Included Slightly Included Included



ADDITIONAL GRADING INFORMATION

Polish EXCELLENT Symmetry EXCELLENT Fluorescence NONE Inscription(s) IGI LG706558046 Comments: This Laboratory Grown Diamond was created by Chemical Vapor Deposition (CVD) growth process. Type IIa



Table with 2 columns: Property and Value. Includes: May 14, 2025, IGI Report No LG706558046, ROUND BRILLIANT, 8.00 - 8.02 X 4.94 MM, 1.94 CARAT, E, VS 2, IDEAL, 61.6%, 56%, Thin To Medium (Faceted), Pointed, EXCELLENT, EXCELLENT, NONE, IGI LG706558046, Comments: This Laboratory Grown Diamond was created by Chemical Vapor Deposition (CVD) growth process. Type IIa