



ELECTRONIC COPY

LG706550615
Report verification at igi.org



May 9, 2025

IGI Report Number LG706550615

Description LABORATORY GROWN DIAMOND

Shape and Cutting Style PRINCESS CUT

Measurements 5.08 X 5.02 X 3.47 MM

GRADING RESULTS

Carat Weight 0.78 CARAT

Color Grade D

Clarity Grade VVS 1

May 9, 2025
IGI Report Number LG706550615
Description LABORATORY GROWN DIAMOND
Shape and Cutting Style PRINCESS CUT
Measurements 5.08 X 5.02 X 3.47 MM

GRADING RESULTS

Carat Weight 0.78 CARAT

Color Grade D

Clarity Grade VVS 1

ADDITIONAL GRADING INFORMATION

Polish VERY GOOD

Symmetry VERY GOOD

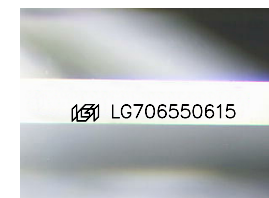
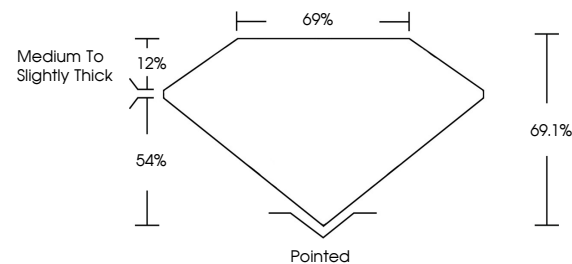
Fluorescence NONE

Inscription(s) IGI LG706550615

Comments: As Grown - No indication of post-growth treatment.

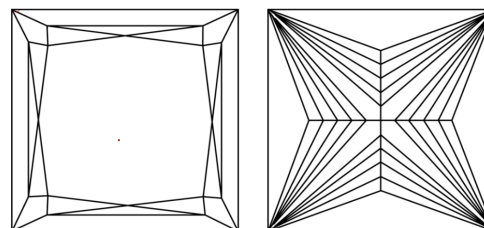
This Laboratory Grown Diamond was created by High Pressure High Temperature (HPHT) growth process. Type II

PROPORTIONS



Sample Image Used

CLARITY CHARACTERISTICS



KEY TO SYMBOLS

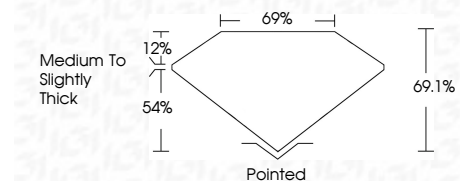
Red symbols indicate internal characteristics. Green symbols indicate external characteristics.

COLOR

D E F G H I J Faint Very Light Light

CLARITY

IF WS 1-2 VS 1-2 SI 1-2 I 1-3
Internally Flawless Very Very Slightly Included Very Slightly Included Slightly Included Included



ADDITIONAL GRADING INFORMATION

Polish VERY GOOD

Symmetry VERY GOOD

Fluorescence NONE

Inscription(s) IGI LG706550615

Comments: As Grown - No indication of post-growth treatment.

This Laboratory Grown Diamond was created by High Pressure High Temperature (HPHT) growth process. Type II



IGI



May 9, 2025
IGI Report No LG706550615
PRINCESS CUT
0.78 CARAT
D
5.08 X 5.02 X 3.47 MM
Color Grade D
Clarity Grade VVS 1
Table 69.1%
Girdle 69%
Medium to Slightly Thick
Pointed
Polish VERY GOOD
Symmetry VERY GOOD
Fluorescence NONE
Inscription(s) IGI LG706550615
Comments: As Grown - No indication of post-growth treatment. This Laboratory Grown Diamond was created by High Pressure High Temperature (HPHT) growth process. Type II